

WEATHER			
Day	Min.	Max.	Forecast
Sept. 11	55	75	Trace
Sept. 12	55	70	0.00
Sept. 13	54	70	0.00
Sept. 14	54	70	0.00
Sept. 15	50	73	0.25
Sept. 16	50	69	0.10

# The Chelsea Standard

FIFTY-NINTH YEAR—No. 12

12 Pages This Week

CHELSEA, MICHIGAN, THURSDAY, SEPTEMBER 12, 1968

10c per copy

SUBSCRIPTION: \$3.00 PER YEAR

## QUOTE

"The people are looking to Congress as the last hope for action in this crime crisis. We must not fail."

John L. McClellan  
Senator (D-Ark.)

## Varsity Looks Good Friday Scrimmage

Chelsea varsity football displayed some of their new moves Friday night in a scrimmage with Michigan Center, and Howell.

Bulldogs did well in all of their scrimmages and head coach Phil Bareis said he was pleased with what he saw on the field. He said the team learned some valuable lessons from the scrimmages. Scrimmages unlike regular football games are unscripted, but if a player crosses the goal line it is to have "scored" unofficially. Half of the field is used, and they are designed to be learning experiences through which the players and coaches can determine strengths and weaknesses of teams.

In the first scrimmage with Michigan Center, the Bulldogs did well offensively and defensively. Chelsea defense kept Michigan Center from scoring at all in the scrimmage with Chelsea. The game was led by Quarterback Craig Houle and Halfback Jim Wojcik. Houle threw a pass to Wojcik for the first touchdown. The second occurred on a pass play. Houle completed two other passes in the scrimmage, picking up considerable yardage for Chelsea.

In the second scrimmage with Howell, the Chelsea defense was in the first play, and Brighten got on to score. But Chelsea, Mike Gaken shaping up the game, and Brighten did not score again. Offensively the Bulldogs did well although they were not complete as many passes. Chelsea scored twice on ground play. David Conklin powered the team over the goal line for the first touchdown. Tim Orthing was loose to score the second touchdown.

The Chelsea defense did not do as well in the third scrimmage with Howell, although Mike Gaken recovered a Howell fumble. Offensively Chelsea did well with the completion of another touchdown pass to Wojcik.

The Bulldogs finished up the evening with a second scrimmage with Michigan Center. The Chelsea defense again contained their opponent as Mike Gaken recovered a Michigan Center fumble. This was his second fumble recovery of the evening. The Chelsea offense scored on a pass from Conklin to Tom Smith.

Undoubtedly, the Bulldogs learned many valuable lessons from these scrimmages. They know their weaknesses and are spending their last few practice sessions improving in areas where they are weak. Under the direction of Coach Bareis, and Co-captains Harvey, Craig Houle and

(Continued on page six)



NEW JUNIOR HIGH: Accompanying the opening of a new school year, Chelsea residents will see the opening of the new Dwight E. Beach junior high on recently-completed Mayor Dr. The 56-acre school grounds

includes a community-built nature center. The school building itself includes 20 regular classrooms, cafeteria, and special annexes for activities requiring labs and work space. Principal Alan Conklin reports an

enrollment of 600 and capacity for 300 more. The new school will be dedicated at 3 p.m. Sunday in a ceremony highlighted by a dedication speech from General Beach.

## Police Nab Escapee in Stolen Truck

Robert A. Hines, 26, an escapee from Southern Michigan Prison Camp Waterloo was arrested by Patrolman David Peebles at 1:45 a.m. Tuesday in a stolen truck.

Washtenaw County Sheriff Department reported to Chelsea police that a 1960 Ford pickup had been stolen from the home of Gene Phinney, 16450 Cavanaugh Lake Rd., within the last five minutes.

Peebles went to the ramp of I-44 and parked until he saw the truck entering M-52. Two miles got out of the drivers' side, and when Peebles approached and ordered them to raise their hands, one turned and fled.

Because he had Hines in custody, Peebles did not follow. He radioed the county and the two cars that responded did not find the fleeing man.

Deputies Aedlo and Swoop took Hines to the County Jail.

A short time later, a white 1964 Plymouth was taken from Donald MacDonald's driveway at 719 Arthur. The car had been loaned to MacDonald from G. A. Sales and had been parked in the drive at 11 p.m. with keys inside. At 6 a.m. it was gone.

The suspect is Joseph Lorraine, 25, the man who escaped from Southern Michigan Prison with Hines and the man believed to have fled. Lorraine is 5' 8" tall with a fair complexion.

## School Enrollment Hits Total of 2,274 For First Week

Unofficial enrollments in the Chelsea School system show an increase of about 65 or 70 over the official enrollment for last year.

The legal count day, in late September is fixed by the state. This gives students who are transferring a chance to be placed in their final school before enrollment is taken. The count made at the time will be the number used to compute state aid reimbursement. Total enrollment has hit 2,274.

Unofficial enrollments are currently listed at 707 for Chelsea High, 530 for Beach Junior High, 602 for South Elementary and 435 for North Elementary, according to Fred Mills, business manager of the Chelsea school system. Official enrollments for last year were: 657, 480, 578 and 428, respectively.

(Continued on page six)

## Police Officer Returns to College

Deputy Bruce G. Siebert, 22, a part-time Chelsea officer, is leaving the force to resume his law studies at Eastern Michigan University in Ypsilanti. He has been filling in for regular officers during the summer.

The newest addition to the Chelsea police force, Louis Schneider, is attending police school at the invitation of Doug Harvey, sheriff. Schneider will be attending the course in Ann Arbor for three weeks.

## School Board Briefs

Present at a regular Board of Education meeting, Monday evening were board members, Irwin, Lancaster, Powers, Taylor, Lewis, Koenn, and Hopkins, Superintendent Cameron, Business Manager Mills, Principals Lane, Conklin and Wojcik and Assistant Principal Galbraith. Guests present were Erwin Trinkle, John Brooks, Reuben Lesser, Sr., Reuben Lesser, Jr., and Mr. and Mrs. Don Alexander.

The meeting was called to order at 8:10 p.m.

The minutes of the Aug. 10 meeting were approved as read. Motion by Lewis, supported by Koenn to pay general fund bills of \$37,535.34. All ayes.

General Fund balance as of Sept. 9, was reported at \$63,203.03.

Motion by Koenn, supported by Taylor to go into executive session at 8:40 p.m.

Meeting called back to order at 9:30 p.m.

Motion by Powers, supported by Taylor that after an extensive hearing regarding the discharge of bus driver George Brettschneider, a substantial question of fact exists in the mind of the Board. In view of this and in view of the questionable discharge procedure in respect to timing, we hereby reinstate George Brettschneider with back pay pending a thorough investigation by the administration of Brettschneider's driving and disciplinary abilities. It is contemplated that this review will cover the entire driving staff and that a report will be made to the board in the near future with final action to be taken at that time. All ayes.

Motion by Taylor, supported by Lewis that the bus supervisor will hire new drivers, but that in the event of discharge, the bus supervisor will consult with the business manager and superintendent for agreement prior to dismissal. All ayes.

Motion by Koenn, supported by Hopkins to untangle the motion of Aug. 10 regarding the sale of the old junior high school building and property. Ayes: Lancaster, Taylor, Lewis, Koenn, Hopkins, Irwin. Nays: Powers.

Motion by Lewis, supported by Powers to sell the old junior high buildings and property. All ayes.

Motion by Hopkins, supported by Koenn to amend the previous motion to read that the money from the sale of the Old Junior High (Continued on page six)

## Worden Children Developing Zoo

It's fortunate that Mrs. Haskell Worden of Cedar Lake has a sense of humor. If she couldn't take a joke, a large assortment of hamsters, mice, rats, guinea pigs, dogs, rabbits, turtles, and children would be minus one home.

According to Mrs. Worden, the situation began to escalate on the last day of school in June. She was picking up her son Richard from Chelsea High school when he came out with a hamster in his hand.

"Isn't he cute?" he asked. When his mother agreed that the little animal was certainly very cute, he asked if he could bring it home for the summer.

After agreeing to go into the hamster boarding business for the summer, Mrs. Worden found

two mice, two rats, and four hamsters keeping herself and Dennis company in the car. "But they're all males, so don't worry," Dennis reassured her.

So she didn't. Until one of the "male" mice defied the laws of nature and had a litter of babies. Although they all died, the determined mice kept trying—three times in fact.

Not to be outdone, the rats gave birth to eight young July 10.

The hamster population had been depleted by two incidences of cannibalism which shrank their ranks to two. However, they too began increasing their numbers.

While the boarded animals, courtesy of the science lab at Chelsea High school, were racing to outdo one another, Eugene, 14, was raising rabbits in the back yard. "He shows them," she explained, "and has won some prizes."

Eugene was outside Sunday with Keith and Neil, two of his buddies, he found a "mushroom" and decided to pick it up and squish it. When he did, one very small turtle was rudely brought into the world. Looking around, Eugene found three more eggs. They have all hatched now and two of them are still carrying the remains of their shells with them.

Eugene brought them to school with him.

Mrs. Worden claims that this is not the first time that school animals have mistaken her home for a maternity ward. Last year Lola, her 12-year-old daughter, brought guinea pigs home for Christmas vacation and they received a little "Christmas present" from it.

However, Mrs. Worden says that she is glad her children spend their time in wholesome ways. "If their name is going to be in the papers, at least it is because they are good children," she said.

## Dedication of Mayer Drive Slated Sunday

Dedication of Mayer Dr., the road that leads to the new Beach Junior High, will be at 1 p.m. Sunday, just before the dedication of the school.

Mrs. Florence Mayer, widow of the late Alfred D. Mayer, prominent Chelsea business and community leader for whom the road is named, will participate in the ribbon-cutting ceremony.

Village President Don Baldwin will be the main speaker in the dedication.

Mayer was born in Sharon township Sept. 11, 1906 to Joseph and Christine Wacker Mayer. He lived in this area until his death April 29, 1961. On June 17, 1939, he married Florence Nelson in Chelsea; they had two children, Nancy and Daniel.

After graduating from Chelsea High school and Cleary College, Mayer operated an insurance agency at 115 Park St.

Some of his many community activities were: Chelsea Village president from 1940 to 1944, chairman of the Chelsea and Sylvan township election boards, president and secretary-treasurer of Oak Grove Cemetery Association. He operated the Secretary of State branch office in Chelsea. He was active in Chelsea village politics. He had a 21-year perfect attendance record at Kiwanis, serving on various committees and as president.

As institutional promotion chairman of the Kiwanis club youth committee, he was chiefly responsible for erection of the Comanche Troop lodge at Bruin Lake Scout Camp in 1957.

In 1954 Mayer was lieutenant-governor of Division VI of the Michigan District of Kiwanis International.

His interest in Boy Scouts earned him a Silver Beaver award in 1960 highest award for adults active in volunteer Boy Scout work. He was a member of the Chelsea Community Chest board of directors and served as campaign chairman, was member and officer of Rod and Gun Club and member of the Chelsea Chamber of Commerce.

## Former Lynn Lipphart Earns Master's Degree

Lynn Marie Berk, formerly Lynn Marie Lipphart of Chelsea, received her MS in English from Purdue University last month. She has married Toby Berk from Chicago and both are pursuing their doctorate degrees at Purdue while teaching there. Mrs. Berk is teaching English and history.

## Beach School Dedication Set For Sunday

### General Dwight E. Beach Will Give Dedictory Address at Open House

The dedication ceremony of the Dwight E. Beach school will feature an open house and an address by the man for whom it was named—General Dwight E. Beach.

The Board of Education had extended an invitation to all district residents to attend the open house 1-5 p.m. Sunday. Guided tours through the building will be offered by members of the Beach student council, beginning just inside the front entrance.

The formal dedication ceremony is slated to begin at 3 p.m. in the school cafeteria. Included in the program will be a dedication address by Gen. Beach.

A native of Chelsea, General Beach rose to the rank of four-star general during his 36 years of military service in the U. S. Army. He has been commander in chief, Army of the Pacific, since Sept. 1966, where he headed the largest single Army command in the free world.

## Olympic Star T. McDermott Addresses JCs

Terry McDermott, winner of Gold and Silver Medals in Olympics, spoke at the Jaycees September membership meeting at St. Paul church.

McDermott won the medals at Innsbruck, Austria in the 1964 Winter Olympic games, and at Grenoble, France in the 1968 Olympics. His specialty was speed skating in the 500-meter race. The athlete spoke of the training, trials and heartbreak of the athletes who participated in the Olympic games and showed the Olympic film "The World Is One." A question and answer period followed.

President Don Proctor conducted the membership meeting, in which many new projects were approved and current projects reported.

Gary Packard and Doug Singlinger, new members, were installed. Jaycee of the month award for August was presented to Art Steinaway for his work on the Jaycee fair projects.

A chicken dinner prepared by the church ladies was enjoyed by the 38 members who attended.

Mrs. Leroy Bristle and Elaine visited Miss Martha Bristle Monday afternoon at the Colonial Manor in Chelsea. Elaine, daughter of Mr. and Mrs. Leroy Bristle, 10020 Old US-12, entered college Monday at McConnell Airlines in Minneapolis.

Born in Chelsea in 1908, Dwight E. Beach graduated from Chelsea high where he played varsity football and basketball. He attended the University of Michigan for two years before entering the U. S. Military Academy where he graduated in 1932. He was commissioned a Second Lieutenant in Field Artillery and assigned to the Army Air Corps. After Pearl Harbor General Beach was transferred to the Southwest Pacific where he organized and commanded the 167th Field Artillery Battalion.

He was gradually promoted to Chief of Staff of Eighth United States Army in 1954. He commanded the 82nd Airborne Division, Fort Bragg, N. C., from 1959 to 1961 when he returned to the Pentagon as the Deputy Chief of Research and Development.

On July 1, 1962 General Beach was promoted to the rank of Lieutenant General and assumed the duties of Chief of Research and Development. He was promoted to his current rank on July 1, 1965 and transferred to Korea as Commander in Chief, United Nations Command; Commander, U. S. Forces, Korea; and Commanding General, Eighth United States Army.

In September 1966 General Beach became Commander in Chief, United States Army, Pacific, with station at Fort Shafter, Hawaii.

The school that bears his name is built on 56 acres purchased from the Palmer family. A nature center is located on the grounds through the efforts of the Conservation Department, Conservation Club, Jaycees, Outdoor Education Committee, and other groups.

The school itself contains 20 regular classrooms, four science rooms, a typing room, language laboratory, special education room, large group instruction room, vocal music room and instrumental music room.

Special areas include a home economics area with food and clothing labs, an art area with crafts and ceramics facilities, wood and metal shops and drafting room.

The gymnasium and an exercise room have been divided for boys and girls. The school contains a library and instruction materials center and a combination cafeteria and auditorium, or "cafetorium."

"The building has been equipped with adequate office and storage space for the 900 student capacity," Alan R. Conklin, principal of the Dwight E. Beach school, cites the present enrollment at about 600.

The dedication program will include participation by many local citizens. The eighth grade band and Dwight E. Beach school chorus (Continued on page six)



FIGHTING FISH: Bud and Olle Johnson, fellow travelers with Don Turner to Northeast Saskatchewan display Arctic Grayling caught in the rapids of Waterbury Lake. The large dorsal fin spread by Bud contributes to the enormous fighting strength of this moderately small breed of fish. (See letter on page three.)



DIRECTING BULLDOGS: The six men providing much of the brains and brawn behind the Chelsea High Bulldogs this season are, front row, left to right, co-captains Craig Houle, Gary Ellenwood and Mike Harvey; and back row, head coach Phil Bareis, assistant coaches Bob Pursel and Rich Bareis.



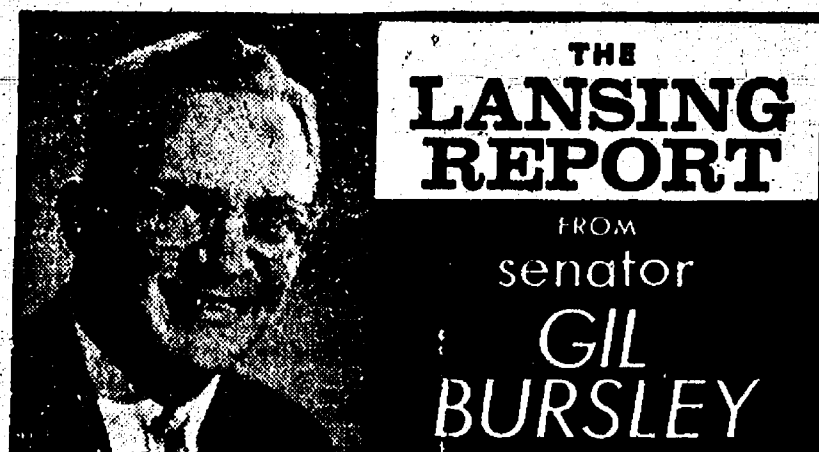
Established 1871  
**The Chelsea Standard**  
 Excellence Award by Michigan Press Association  
 1951-1952-1953-1954-1955-1956  
 Walter P. Leonard, Editor and Publisher

Published every Thursday morning at 800 North Main Street, Chelsea, Mich. 48118, and second class postage paid at Chelsea, Mich., under the Act of March 3, 1879.

ADDRESS CORRECTION REQUESTED

Subscription Rates (Payable in Advance)  
 In Michigan: One Year \$3.00, Six Months \$1.75, Single Copies \$ .10  
 Outside Michigan: One Year \$4.00, Six Months \$2.25, Single Copies \$ .10  
 Service men or women, anywhere, 1 year \$3.00

NATIONAL NEWSPAPER ASSOCIATION  
 National Advertising Representative  
 MICHIGAN NEWSPAPERS, INC.  
 267 Michigan Ave.  
 East Lansing, Mich. 48828



**THE LANSING REPORT**  
 FROM  
 senator  
**GIL BURSLEY**

How much money is the Michigan income tax producing? How are total state tax collections this year by comparison with previous years? These are questions I am frequently asked. They are of direct concern to every taxpayer. Preliminary collection figures for fiscal year 1968 reveal record revenues from all major taxes. The individual income tax produced \$262 million dollars during the nine months it was in effect—an average of \$29 million dollars per month. The corporation income tax and the business activities tax, which it replaced, are more difficult to compare. The changeover took place Jan. 1 whereas the individual income tax started last Oct. 1. Certain groups which the business activities tax used to cover (partnerships and unincorporated businesses) now come under the individual income tax. There is also a new financial institutions income tax. Total tax collections from the business community will rise substantially, however. Of major importance is the 7 percent increase from our major revenue producer—the sales tax. This amounted to an increase of \$42 million dollars to a total of \$651 million dollars. The closely related "use tax" also produced more revenue, an increase of \$4 million to \$75 million dollars. The 4 percent sales tax can easily be calculated to have applied to over \$40 billion dollars in retail sales or about 56 percent of Michigan's personal income. People pay more in cigarette taxes each year in spite of the warnings by heart and cancer specialists. The 7 cent cigarette tax brings in about \$80 million dollars or a little over \$11 million dollars per penny of tax on a pack of cigarettes. Many other states have been raising their cigarette taxes. New Jersey this year increased it from 11 to 14 cents per pack. The gasoline tax rate was increased during the year and this contributed to a 12 1/2 percent rise in motor fuel tax revenues—to a total of \$222 million dollars for fiscal 1968. Other taxes that recorded all-time highs in terms of revenue produced were the utility property tax, the inheritance tax and the intangibles tax. In spite of these record revenues state government is still far short of funding all the demands made upon it—and some of these requests should rightfully be cut back. This after all is the function of the state budget office and the legislative appropriation committees. I stress, however, that Michigan in the coming year will be providing, on a pay-as-you-go basis, an ever higher level of services for her citizens. Our educational programs, our health facilities and our highways—to mention only three major areas—are among the nation's best.

## Cleary Graduates Are in Demand

Because Cleary College specializes in training you for a successful management, accounting or secretarial career, more jobs are available than Cleary can supply graduates to fill!

Cleary College offers one, two and four year programs leading to a diploma, associate degree or bachelor's degree. At Cleary you learn more in order that you may earn more upon graduation. And the prestige of a specialized Cleary business education assures you of a more rewarding future.

Attention June Graduates

FALL TERM  
 STARTS  
 SEPTEMBER 23, 1968

It's not too soon to register for the fall of 1968. Reserve your courses now at the hours to suit your schedule and requirements.

Day and Evening Classes—8 a.m. through 3 p.m. daily; evening class hours available Monday through Friday for one, two or three nights a week.

SEND COUPON TODAY

Or phone the Cleary College Admission Office, HU 3-4400. Get the specialized education you need for business success.



**CLEARY COLLEGE**  
 SPECIALISTS IN BUSINESS EDUCATION SINCE 1888  
 2178 Washtenaw, Ypsilanti, Michigan 48197

Please send me your Free Catalog. I am interested in the \_\_\_\_\_ term.

Name \_\_\_\_\_

Address \_\_\_\_\_

City \_\_\_\_\_ State \_\_\_\_\_

Zip Code \_\_\_\_\_ Phone \_\_\_\_\_



## O SAY, DOES THAT STAR-SPANGLED BANNER YET WAVE O'ER THE LAND OF THE FREE AND THE HOME OF THE BRAVE?

FRANCIS SCOTT KEY (1790-1840)

## MICHIGAN MIRROR

By Elmer E. White, Secretary, Michigan Press Association

**Yes But No**  
 Enthusiastic lack of support for Michigan's Quality Recreation proposal was shown by the United Auto Workers union at a meeting of state leaders. The union would not oppose the proposition, but neither could it support the plan in its present form, according to Geno Serafini, from the union's conservation division. Governor Romney introduced two separate but related programs to the group. One, designed to reduce water pollution, received support from those present, including the UAW. The second, which finances expanded recreation, was subject for UAW criticism. Serafini, who said he spoke for Walter Reuther, argued that the \$30 million designated for local parks was too little and not likely to encourage parks where he thought they were needed most. He expressed concern that the proposal would not result in parks in the densely populated areas of Detroit, Grand Rapids, Flint and other highly urban communities. Instead, Serafini charged, the parks would be located in suburbs and cities where they would be more available to wealthier people. He asked for a revision of the plan. The Governor and conservation officials agreed that further consideration of the points he made would take place promptly. Present plans call for a \$100 million recreation proposal and a \$335 million water pollution control proposal on the November ballot. If authorized by voters, the state will bond itself for the \$435 million. Proponents stress that the bonds can be sold with no increase in taxes. Retirement of other bond issues and economic growth will provide enough revenue to cover principal and interest payments within the present tax structure. The \$30 million earmarked for local recreation facilities would be available to communities on a matching basis with the state paying 75 percent of costs. The remaining \$70 million would be spent for state parks, fishing areas, fish hatcheries, forest campgrounds, hunting areas, hiking trails, snowmobile trails, etc. Combined with local and federal funds, an estimated \$170 million will be available for recreational purposes. Clean-Water proposal, if approved by voters, will help finance new sewage treatment plants, improvements to existing plants, and loans for new sewers. Some 150 communities are currently in violation of Michigan's pollution control law. These communities would qualify for 50 percent assistance from the state and 25 percent from the federal government in instituting a pollution control program. About \$50 million would be earmarked for sewer construction and \$285 million for treatment plant construction and improvement. The addition of federal and local funds would provide more than \$800 million to clean up Michigan's lakes and streams. The two proposals will appear separately on the ballot this fall, and passage of one does not depend upon passage of the other. Voters who are concerned with adequate recreational facilities and lots of good, clean water will support the propositions with their "yes" votes.

## Country Women Of World Meet On MSU Campus

Two thousand women from all over the world have converged on the Michigan State University campus to attend the 12th Triennial Conference of the Association of Country Women of the World. The ACWW is a world-wide organization of rural and country women working together toward a better way of life in the home and community. Its ultimate goal is a better world, free of hunger, disease, and strife. Organized in the 1920's by a handful of women meeting in London, the ACWW has grown to include more than 6,000,000 members in 200 constituent societies in 56 countries. International headquarters are in London under the direction of Mrs. John Bell, general secretary. With a conference theme devoted to "Learning To Live," delegates will attend work and study sessions in areas relating to the individual, the family, the community, and the world. Michigan women representing the Farm Bureau Women's Committee, Extension Homemakers Association, and the Women's Farm and Garden Clubs have been planning this conference since the last international meeting, held in Dublin, Ireland, in 1965. An additional 4,000 women from all parts of the United States were on hand for USA Day, Sept. 5. Sunday, Sept. 8, 600 overseas delegates were guests in hundreds of homes throughout Michigan. A special Detroit Day was scheduled for Sept. 11. Post-conference tours are planned by many of the delegates.

## BUILDINGS FOR SALE

Sealed proposals will be received by the undersigned at 1750 Guardian Building, Detroit, Michigan 48226, until 2:00 p.m., E.D.T., on Tuesday, September 24, 1968 for sale and removal from the premises of buildings at 8800 North Territorial Road, Dexter, Michigan.

Buildings include handwelded oak timbers with wood pins. Studs 4 x 4s and 6 x 6s, 2 story barn with heavy oak framing. Siding is weathered and unpainted. A Certified or Cashier's Check in the amount of ten percent (10%) of the bid price must accompany the proposal. The successful bidder will be required to remit the balance of the Bid Price within seven (7) days of the date of being notified of the award. Envelope containing proposal should be plainly marked as follows:

## "Building Proposal"

The Authority reserves the right to reject any or all proposals, to waive irregularities and/or formalities in any proposal and to make the award in any manner deemed for the best interest of the Authority.

Proposal forms may be obtained at the offices of the Authority, 1750 Guardian Building, Detroit, Michigan 48226, or at the Park Office at 8801 North Territorial Road, Dexter, Michigan 48130.

**Huron-Clinton Metropolitan Authority**  
 P. K. McWETHY, Secretary

## JUST REMINISCING

Items Taken from the Files of The Chelsea Standard

### 4 Years Ago . . .

Thursday, Sept. 10, 1964—Total enrollment in all Chelsea schools on the first day of classes, was approximately 2,100. This total included 456 at South Elementary; 498 at North Elementary; 257 at St. Mary's; 424 at Chelsea Junior High; and 534 at Chelsea High. Erwin Halst and Son were awarded the "Premier Breeder Banner," highest award in the Black Top Delaine sheep division at the Michigan State Fair. Duane Bycraft, 11-year-old grandson of Erwin Halst, had the Corriedale champion ewe in the junior division at the fair.

Tish Preuss is now in England as one of the seven-member U.S. Curtis Cup golf team who will compete tomorrow and Saturday with the British Curtis Cup team at Royal, Portcull, South Wales. The Rev. George Stanford, former chaplain at the Methodist Home, and his wife, Florence, took part in the annual Labor Day Mackinac Bridge walk. The 4.5 mile walk celebrated their 50th wedding anniversary and was about the same distance the 72-year-old minister walked to his parish in the early days of his ministry.

At Tuesday's Kiwanis club meeting, Don Turner, delegate to the Kiwanis International convention in Los Angeles presented a tape he had made of each day's activities at the convention. He had originally sent the recording to Paul F. Niehaus, secretary of the Chelsea club. David Winans, son of Mr. and Mrs. David Winans, is one of more than 100 candidates for Central Michigan University's 1968 Chipmunk marching band who reported for band camp tryouts on the CMU campus Wednesday.

Mr. and Mrs. Alfred Detting, Sr. will celebrate their 50th wedding anniversary Sunday starting with a High Mass at 10 a.m. in St. Joseph Catholic church.

### 14 Years Ago . . .

Thursday, Sept. 9, 1954—The question of "whiskey-by-the-glass" as it is popularly known, is to be an issue of the November election in Sylvan township. Petitions to place the issue before electors of the township were presented to Robert G. Foster, Sylvan township clerk. Undersheriff Charles Shaw and Detective Sgt. Melvin C. Fuller responded last week when Warren Hoover reported that plants growing on his farm were identified as marijuana. The officers placed the retail value of the marijuana at \$35,000 if sold on the illicit market. The plants are believed to have been growing in the same spot for more than 60 years without being recognized.

High school classes elected officers the first day of school as follows: Seniors: Larry Chapman, president; Diette Hibbs, vice-president; Richard Ringe, secretary; Juniors: Fred Hoffman, president; Edward Walker, vice-president; Beth Irwin, secretary. Sophomores: Barbara Collins, president; Tim Schulze, vice-president; Bud Guest, secretary. Chelsea Community Fair entertainment chairman Paul F. Niehaus says that Governor G. Mennen Williams will be present to crown the queen Saturday. Walter Harper and Ted Balmer are in charge of floats for the parade and are urging that prospective

entries be reported to them as soon as possible. Mrs. Sally Smith, president of the Chelsea Teachers Club, and Miss Mabel Fox will be in Harrison Friday night and Saturday to attend sessions of the Michigan State Teachers club. Police Chief George Doe, who is Civil Defense director for Sylvan township, has appointed Herman Bertke as chief of the Sylvan township Auxiliary firemen's group. Thirty-two members were present for the September meeting of Herbert J. McKune Unit No. 81, American Legion Auxiliary. The meeting was Tuesday at the Legion Home at Cavanaugh Lake.

The Eastern Star production "The World's All Right" will open Friday and Saturday with the Kiwanis Story Hour with Mrs. Baxter acting as the Tell-Me-A-Story Lady. She is assisted by local children between the ages of 5 and 9. Also included in the scene are Mr. and Mrs. Elmer Smith as the mother and father of Nursery Land.

Voters in the primary election Tuesday selected Frank D. Fitzgerald and Arthur J. Lacy as the leading choices for governor. Earl C. Michener, former congressman from this district, polled more than double the votes received by his opponent, J. Milton Hoyer. L. J. Planti, for the Republican congressional nomination.

Every former Chelsea resident will receive a personal invitation to attend the 100th Birthday Party and Homecoming Oct. 5 and 6. The present set-up will provide for acts and entertainments each hour of the two days so there will be no long delays in the program. Are you planning a long automobile trip? Remember, safe the Michigan Heart Association, don't drive for longer than an hour—at most, two. The blood can pool and sludge in your legs. Get out of your car and move around—gambol on the green—dance, run, but get moving. Slugged blood can induce a heart attack or other, unpleasant consequences.

Michigan 4-H's haven't permitted the summer drought to hamper their food production projects. The fact was demonstrated at the annual 4-H Club Show at Michigan State College Sept. 5 to 8 where vegetable and farm crop displays were on a quality standard not below that of previous normal rainfall years. Fire broke out in the Francisco school house Friday evening and the Grass Lake fire department was unable to check the flames. The few people on the scene succeeded in removing nearly all the contents. The school board hopes to rent space for the 12 pupils until a school house can be built.

Three bandits entered the home of Mr. and Mrs. Frank Leach of Lima township Wednesday night and ordered them at gunpoint to turn over any money in the house. The trouble with most money is that they are unused.

Available in more than 150 shapes. The trouble with most money is that they are unused.

## MONEY TROUBLE?

ONE PLACE TO PAY!  
 Credit Management  
 Service  
 662-2565  
 342 Municipal Court Bldg.  
 Ann Arbor  
 State Licensed and Bonded

## How to save your wife and over \$140.00 with a new Gas dryer.



If your wife is drying clothes on a line, she's working for less than 2¢ a load. That's all it costs to do it in a Gas dryer. And that's the thriftiest, easiest way in the world. It's 1/5 the cost of the next best way—with electricity. So when you consider the number of loads dried by an average family, they could save over \$28.00 a year with Gas. In 5 years that comes to \$140—the purchase price of a new Gas dryer. And since installation is free, you can save right from the start. No wonder we say Gas makes the big difference . . . costs less, too. See the latest models at dealer or Gas Company showrooms. 7 out of 10 families now using dryers have Gas dryers. Care to make it 8?

Isn't it time you bought her a new Gas dryer?

MICHIGAN CONSOLIDATED GAS COMPANY

## Uncle Lew from Lima Says:

DEAR MISTER EDITOR: Some of the fellers at the country store Saturday night was of the opinion one of the troubles with this nation today was that we wouldn't recognize our problems and face up to the situation. Ed Doolittle, fer instance, said our pretending that them folks on Formosa was the legal Government of China was the granddaddy of hopeless causes.

Ed, Mister Editor, knows as much about foreign policy as a Jersey bull knows about the New Testament but ignorance ain't no drawback to Ed. He'll discuss anything. At least one. Zeke Grubo said he didn't know nothing about them Chinese problems but he was agreed that folks as well as Government has to face up to and recognize their bad situations. Fer a long time, he said, them television networks wouldn't admit the others was there. Final, they started calling one another "the other network" and then some NBC announcer slipped up one night and said "CBS" right on the air. After the shock was over, the flood gates was open and now even the butter people will admit in public they was such a thing as margarine. It used to be, said Zeke, that a car manufacturer would compare their car to riding on air, or maybe settling in a easy chair, then they got to talking about other cars "in the same price range," then they referred to them as "Car A" and "Car B" and now they come right out and call their competition by name.

Clem Webster said he reckoned the idea was not to do your competition no favors by telling folks about them, but he was agreed with Zeke that it was better to

reconcile a problem and try to deal with it. Some people don't recognize poison ivy, Clem allowed, but they break out in a rash just the same. Them that don't recognize the difference between toad-steals and mushrooms, better let somebody else do the picking, was Clem's words. The fellers was general agreed with Zeke and Clem and they all listed the things they was going to recognize. Bug Hookum said he was going home and recognize a broke board in his porch that had thrown him a dozen times in the past two year, and Josh Clodhopper confessed he had better recognize them thin tires on his pickup truck.

Ed closed the session by saying it was a puzzle to him why the U. S. wouldn't recognize a outfit as big and mean as Red China but recognizes the Communist Party and let's them run a candidate for President along-side the Democrat and Republican Party.

That's the first time, Mister Editor, Ed ever recognized the Democrat Party.

Yours truly,

Uncle Lew.

## Howell Livestock Auction

Every Monday at 2 p.m.

★ Southeastern Michigan's largest and most complete Auction Market.

For Trucking Information Call Howell 546-2470





**FISHING LODGE FRIENDS:** Bud Johnson (second from left) and Olie Johnson (extreme right) joined Don Turner in a northern Saskatchewan fishing expedition last week. Judging from the smiling faces in this photo, the Johnsons and other guests at the lodge were also enjoying the good fellowship of the evenings.

## Olie, Bud Johnson Meet Turner for Canadian Fishing

Edmonton, Alberta  
Sept. 1, 1968

Since my last report I have been at it again, traveling through Canada's northland in search of the elusive trout and Arctic Grayling in northeast Saskatchewan.

I joined up with local Chelsea residents Olie and Bud Johnson in Winnipeg, Manitoba, for this week's trip to Waterbury Lake. Waterbury Lake is 18 miles long, eight miles wide at the widest point. It is dotted with numerous small islands covered with spruce and jack pine, with a few birch trees here and there. The lake is teeming with large lake trout and northern pike or "jackfish" as the pike are called in Canada. The streams flowing in and out of the lake are alive with Arctic Grayling. We

before I left Chelsea. I am really thankful that my schedule worked out so that I could join Bud and Olie there.

To reach Waterbury Lake we flew on a scheduled flight from Winnipeg with Transair Airlines to Lynn Lake, Manitoba. From here we were picked up by float planes and transported 150 miles farther to Waterbury Lake.

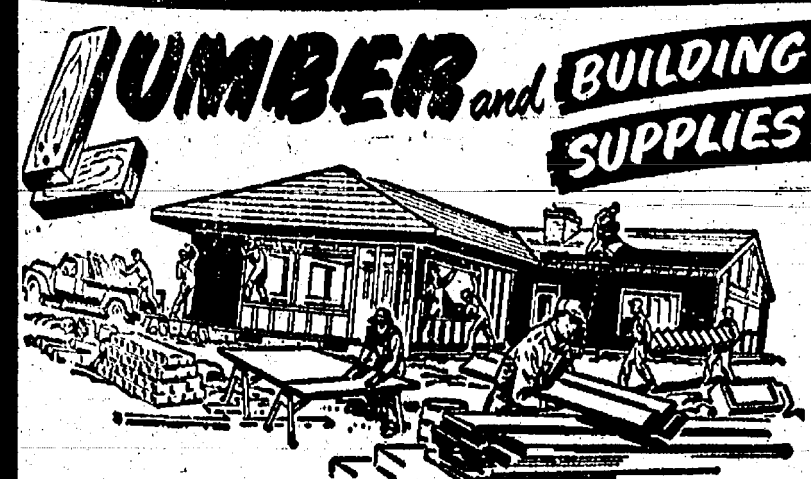
Here we were welcomed by our host and hostess, Jim and Shirley Jackson, a very charming couple. They do everything possible to make their guests comfortable during their stay. The lake is teeming with large lake trout and northern pike or "jackfish" as the pike are called in Canada. The streams flowing in and out of the lake are alive with Arctic Grayling. We

**SALYERS COLONIAL DINING**  
112 E. Middle St., Chelsea

Open Tuesday through Saturday,  
10 a.m. to 10 p.m.  
Sunday, 8 a.m. to 8 p.m.

**FEATURING EACH FRIDAY:  
FISH FRY and SALAD TABLE**  
Turkey dinner on Sunday plus a complete menu each day.

Come in and enjoy the friendly  
Early American atmosphere  
while you dine.



For Those Who Want the Best  
in High Quality House Paint  
WE HAVE THE NEW  
**MINNFLO-X.. \$7.95**

Let Us Quote on Shingles for Your  
Re-Roofing Job Using Frey  
**235 - lb. SHINGLES**  
Underwriters Approved

**Finkbeiner Lumber Co.**

Phone  
Chelsea  
GR 9-3881

On Old  
US-12  
Just off  
S. Main St.

MARTIN STEINBACH, Owner

## Lima Center Group Hosts Foreign Ladies

Guests of the Lima Center Extension group last Sunday were our representatives from England, Canada, Holland, and Southwest Africa. The women were attending the Triennial meeting of the Association of Agricultural Women of the World held at Michigan State University in Lansing.

Members of the Lima Center group, organized by Mrs. Glen Edict, retiring president, picked up the four ladies for a busy day of re-creating acquaintances. They took them to church, to their homes and farms, enjoyed a pot-luck family picnic with them at Pierce park, toured Chelsea and returned them to campus.

This was a rather unique experience for the extension group, as few of the conferences are in the U. S.

All of the guests spoke English. In fact, the ladies blended so well that Mrs. Harold Sig, youngest son couldn't tell who was foreign. The ladies were taken to a supermarket, car wash, Jiffy Mix, the new medical clinic and the cemetery. They expressed interest in the latter and described customs in their countries that differ from ours.

Miss Nina Sturdy, from Dorset, England, was a farm woman. She has Dorset sheep and a herd of cattle on her farm there. She attended one of the early meetings of Associated Country Women held in 1938.

The guest from Windhoek, South-west Africa was an extension agent similar to the ones we have in the U. S. She lives in an area supported mainly by Persian lamb raising and diamond mining.

A farm wife from Alysham, Saskatchewan, Canada, left a 900-acre crop and livestock farm to attend the conference. Since her area was settled in 1911, she was not familiar with older houses. She expressed interest in our century-old buildings. In her heavily wooded area large farms are the rule rather than the exception.

A fourth guest, from the Netherlands, did not have a farm background. Apparently Holland is more modern than the extension group had thought. When they took her to the car wash, thinking she would be impressed, she said that Holland had had them for years too. She explained that wearing her wedding and engagement rings on her right hand meant she was Catholic in Holland.

The next meeting of the Lima Center Extension Group will be Oct. 9 at the hall.

## BOY SCOUT NEWS

**TROOP 465**—Boy Scout Troop 465 elected officers at the opening meeting. Ricky Foytik is the new senior patrol leader. He is assisted by Carner Sloum, Jr.

Scouts elected Larry Garlick on the Eagle patrol and Bob Taylor on the Bat patrol to be leaders. In addition there were three new assistant scoutmasters, Daniel Foytik, Francis Ferrier and William Bauer. They will be helping scoutmasters Earl Dreiman and William Snyder.

The troop welcomes all boys 11 years of age or over.

**ON MISSILE BATTERIES**—The Pentagon reports that the Army is considering shutting down a number of anti-bomber missile batteries as an economy measure ordered by Congress. Some sites are less than 10 years old.

and restful spot at Waterbury Lake.

Most made a vow that we should return. It was with another degree of sadness that I said goodbye to Olie and Bud at the Winnipeg airport as they got their flight to Metro airport and I caught a jet to Edmonton.

From here I shall head into the Canadian Rockies for some more scenic adventure. I will keep you posted as to my wanderings.

Don Turner.

Complete feeding rations for all your livestock, poultry.

**YOU'LL PROFIT FROM BETTER FEEDS**

Extra proteins, vitamins and minerals are scientifically blended to promote your stock's growth and health, and to boost your profits.

**FARMERS' SUPPLY CO.**  
PHONE GR 5-5511

## Red Cross Ships 900 Gift Bags to Men in Vietnam

Washtenaw County Chapter of the American Red Cross is expressing a deep thank you with very special thanks from servicemen for 721 filled individual gift bags and 200 empty for hospitals in Vietnam.

Here are excerpts from a few of the many letters received from servicemen in response to the ditty bags distributed last year.

"28 Dec. '67—Hi: I am a Marine over here in Chu Lai. I received one of your bags for Christmas. All I can say is Thanks to all of you for caring. Christmas over here isn't much, but when a guy receives something from people he doesn't know, it gives him a good feeling to know there are some who still care about him and all the boys over here. Hope you all had a wonderful Christmas. Thanks Cpl. Dave Asbury, USMC."

"Dear Sirs: It is most heartening to know that there are so many people back home who are thinking of us. Being a Detroit resident I really made me feel good to see that people near my hometown are behind the guys over here. I too received a package and I'd like to 'Thank You' from the bottom of my heart. I would like to take this opportunity to wish everyone in the Washtenaw County Chapter of Red Cross a Very Merry and Blessed Christmas and Best Wishes for a Prosperous and Happy New Year. Cpl. Walt Super, USMC."

"Hello there: My name is John C. Wilson and I am just writing Christmas present. I was one of those who received a package from your organization. Although I am not from Michigan, I am just across the Lake from your state. My home town in Milwaukee, I am stationed in Chu Lai, Agui. I want to say 'Thank You' for what your organization is doing for us. Sincerely, Cpl. John C. Wilson."

"Hello: Our thanks to you and the participating groups that made our Christmas here at Chu Lai Marine Air Base much closer to home. Very gratefully, Major R. S. Maycock."

"Dear Sir: Your Christmas presents were certainly well received by members of this squadron. My sincere appreciation to all the participating groups who gave their time and energy to this project. It is refreshing to actually witness a tangible gesture of support from a representative cross-section of Americans. My officers and men here in Chu Lai, Vietnam, join me in extending our appreciation for making our Christmas a little happier. Semper Fidelis. Lt. Col. Commanding."

"Dear Sir: I wish to thank everybody who had a hand in the packages sent to us overseas. You don't know how happy the men are to think not all have forgotten them back in the motherland. I would rather be home with my loved ones than be here, but people like you make me proud to fight for the free world. God bless you all. S-Sgt. J. E. Adams."

"25 Dec. Dear People: I would like to thank all of you for the Christmas gift I received from you today. It makes a guy feel pretty good to know that some one back in the States really cares enough to send us something. Especially all the wonderful girls clubs and sororities. It has been so long since I've seen an American girl. I begin to forget what they look like. Well, I pulled bunker duty tonight so I have to leave, let me thank you again for the gifts. Yours truly, Pfc. T. L."

These and other letters are on display in the Red Cross Chapter Headquarters on Packard Rd., Ann Arbor. Anyone may see them if you are in the vicinity.

## Farmers Urged To Check Grain Stored Under Loan

Farmers were reminded today to check closely on the condition of any grain they have on their farms under Commodity Credit Corporation loans.

Earl Doletsky, chairman, Agricultural Stabilization and Conservation county committee, points out that fewer inspections are made now by the county ASCS office, and the farmer therefore has more responsibility for maintaining and watching his own stored grain. If there should be insect infestation or deterioration from some other condition, the real loss would be to the farmer since his final returns will be based on the condition of the grain when the loan is paid off or the crop is delivered in payment of the loan.

In case where the grain is found to be deteriorating and some loss might occur, Doletsky said, the farmer should notify the county office immediately so that arrangements may be made to correct the condition or move the grain. This will minimize the loss and benefit the farmer's pocketbook.

## SUNDAY'S SERMON

### Achievement

While we might envy another man's wealth, or his standing in the community, we would most likely not be too quick to change places with him. To do so would mean that we would have to give up some things that are near and dear to us.

So it is that when we say, "I wish I were in his place," we really mean that we would like to have his money, or we would like to have his talent as an executive, or an achiever.

We would not necessarily want all of this man's friends. We would certainly want none of his problems, too. We would, instead, pick and choose, hoping to swap off the bad for the good.

It's rather silly, isn't it? Is it not better that we approach self-betterment through self-analysis? Is it not better that we realize that "wishing" is no substitute for effort?

Count the good things that are yours. Consider the areas in which you can do better by work and application. You would not give up the good things in your life. Hold on to them. Make the effort to do something about the things that you do not like. You may discover the secret of the successful man: achievement through effort.

**BED OF AIR**  
Charlotte, S.C.—A bed of air costing \$1000,000 has been developed at the Medical College of South Carolina. Thomas S. Hargest, a bio-medical engineer, and Dr. Curtis P. Artz, designers of the model, hope it will solve the problem of keeping burned or paralyzed patients comfortable during long confinement.

Loud talking sometimes passes as intelligence, but not for long.

**VACUUM CLEANERS ELECTROLUX SALES and SERVICE JAMES COX**  
Manchester  
Ph. 428-2931 or 428-8221

## DON'T BUY ANY HEATING OR COOLING SYSTEM...

UNTIL YOU SEE  
**WILLIAMSON'S**  
NEW  
**"FIVE-IN-ONE"**

1. Heats the home
2. Adds moisture in winter
3. Cools the home
4. Removes humidity in summer
5. Electronically cleans the air.

Williamson's new "Five-in-One" completely outdates all conventional heating and cooling systems. In just one cabinet, no larger than the average size warm air furnace, the "Five-in-One" includes all the necessary components to heat, humidify, cool, dehumidify, and electronically clean the air in your home. The "Five-in-One" will cost less to install and is far more attractive than components purchased separately and combined to achieve the same total comfort.

For gentle warmth in winter, pleasant coolness in summer, and air pure, fresh and properly moistened all-year-round, take a good look at Williamson's new "Five-in-One"—an entirely new concept in total indoor comfort.

**JOHN W. STEELE**  
HEATING and AIR CONDITIONING  
Phone GR 9-4451 521 Garfield



THESE WERE "KEEPERS": Olie (left) and Bud Johnson caught Lake Trout by the dozens and threw all back except those hooked deeply. The large trout held by Olie weighed 15 pounds and gave him quite a battle before being landed.

A modern vacation leaves a man unable to work effectively for at least a week thereafter. One of these days, the ideal political race will be staged and every candidate will win.

**North Lake Orchards**  
State Certified Farm Agricultural Market  
13260 NORTH TERRITORIAL RD.  
Open Daily Except Monday and Thursday  
Canning Tomatoes and home-grown Melons ready in two weeks.

**We'll Pep Up Your Battery!**

Don't let your battery let you down! See us for battery service... and every auto service.

**COMPLETE ONE-STOP SERVICE**  
**Bill Brown's Super Service**  
GOOD GULF PRODUCTS  
295 S. MAIN ST. PHONE GR 9-1311

**BOOTS**  
YOU CAN DEPEND ON

**OUTDOORSMAN SERVICE SHOES**  
Start at \$13.99

For outdoor work these long wearing boots can't be beat. Built for durability, constructed for comfort. Smooth leather uppers, cushioned insoles, steel shanks. Some with cork soles. Others with leather or crepe soles.

**DANCER'S**  
"Chelsea's Friendly Dept. Store"



Ads  
Taken  
Till 5 p.m.  
Tuesday

IT'S EASY TO  
BUY-SELL-RENT-  
HIRE & FIND WITH

WANT ADS

WANT ADS

WANT ADS

## WANT ADS

**The  
Chelsea Standard**

**WANT AD RATES**  
PAID IN ADVANCE—All regular advertisements, 50 cents for 25 words or less, each insertion. Count each figure as a word. For more than 25 words add 2 cents per word for each insertion. "Blind" ads or box number ads, 55c extra per insertion.  
CHARGE RATES—Same as cash in advance, with 15 cents bookkeeping charge if not paid before 5 p.m. Tuesday preceding publication. Pay in advance, send cash or stamps and save 15 cents.  
DISPLAY WANT ADS—Rate, \$1.10 per column inch, single column width only, 8-point and 10-point light type.  
CARDS OF THANKS or MEMORIALS—Single paragraph style, \$1.00 per insertion for 50 words or less; 3 cents per word beyond 50 words. Minimum, 1 inch.  
COPY DEADLINE—5 p.m. Tuesday, week of publication.

TRAVEL TRAILERS—13-ft. and up; 10x55 ft. trailers. John R. Jones Trailer Sales, Gregory, Mich. Phone 498-2655. 43ct

SEE US for transit mixed concrete. Klump Bros. Gravel Co. Phone Chelsea 479-2712, 4950 Loveland Rd., Grass Lake, Mich. 40ct

**WORK SHOE HEADQUARTERS**  
Famous Red Wing Brand  
\$10.95 to \$23.95

Foster's Men's Wear 2ct

**RUBBISH HAULING**  
Write  
**BILL MOUCH**  
19711 Doyle Rd., Gregory, Mich.  
Phone Gregory 498-2852 32ct

**CUSTOM SPRAYING**—Voco interior white farm painting. J. L. Bird, phone 517-547-5447, Manitou Beach. 31ct

FOR SALE—Trash drums, rabbit pens, typewriter, GE radio, phone. Phone 479-5531. 10ct

For your household and cosmetic needs call your

**Fuller Brush Dealer**  
475-7130  
426-8319 10ct

Would You Believe  
**Art Linkletter**

"You can earn \$30 to \$50 weekly in just 2 or 3 hours evenings spare time—and have a free wardrobe too!" There's no investment, delivering or collecting. You'll have fun, new clothes, cash, car required. Call Chelsea 475-7491 or Jackson 764-4005. 14

**ATTENTION WORKING MOTHERS:**  
Have room for one or two day-care children in my licensed home. Mrs. Nelly Cobb, 475-7236. 33ct

**WANTED**—School bus drivers, Chelsea school district. Contact Wally Grossman, 475-8255. 41ct

FOR SALE—Timothy seed. State tested. Reuben Lindemann, 4015 Dexter Town Hall Road, Call HA 6-5094. 14

FOR SALE—Baby buggy, bassinet, crib, Detroit ping pong table with paddles and net, Kolvinator electric range; reasonable. Ph. 479-5671. 11

**TRAP SHOOT**—Chelsea Rod & Gun Club grounds. This Sunday, 10 a.m. to 1 p.m. 15

FOR SALE—1962 Chev. 4-door sedan. Call 475-8217. 12

SOAPS on the run that is so clean the spot with Blue Lucite. Rent electric shampooer \$1. Donor's, Chelsea. 12

FOR RENT—Nice 3-room upper apartment, modern kitchen, front entrance. Adults. 479-2192. 12ct

**HOUSES FOR SALE**—Small farms, room for horses and kids, hux, soil or trade with Art Daniels 426-4696, or 3100 Ford Rd., 421-7880. 12

FOR SALE—Heater/ator. Phone 475-7696. 12

## WANT ADS

**REAL ESTATE**

Need Listings  
Lake Property - Farms  
Vacant Parcels

**LOCAL SALESMAN**  
**H. T. HAYNES**

13835 Sauer Drive, North Lake  
Phone 475-7157

**EDWARDS REAL ESTATE AND INSURANCE**  
Phone 482-8570 31ct

See Us for  
**FORMAL WEAR**  
Rentals for all occasions.  
5 new colors available.

Foster's Men's Wear 4

**REAL ESTATE**

Do you want a home or cottage on a lake, a farm or country home, a building site? We have them.

**Eugene R. Young, Broker**  
Phone 878-3792  
Mary Allen, 878-3826  
Virginia Visel, 426-2224 30ct

**EXCAVATING**

Basements, bulldozing, gravel, driveways and parking lots. Topsoil.

**FREE ESTIMATES**

**Deatrick's Sales & Service**  
Phone 475-8120 anytime 15ct

FOR SALE—3-bedroom home at 247 Washington St. \$21,200. Call 475-8108 or 475-8518. 7ct

**TREE REMOVAL DONE**—Also buyers of standing timber and walnut trees. Chelsea 475-7631. 34ct

**Machine Operators**

No experience necessary. Permanent position. Full Blue Cross-Blue Shield plan paid. Paid life insurance. Pension Plan. Paid sickness and accident plan. To 3 weeks vacation.

**APPLY:**  
Employment Office  
**O & S Bearing & Mfg. Co.**

Whitmore Lake, Michigan  
"An Equal Opportunity Employer" 12

**WANTED**—Steady employment driving ice cream truck and part-time plant work. Fine working conditions, good opportunity for veteran or man looking for change. Write Box SE 5, care of Chelsea Standard. 10ct

FOR SALE—Toy Fox Terrier and Pomeranian puppies, registered. Stud service for Poodle, Chihuahua and Toy Fox Terrier. 3445 N. Lima Center Rd., 479-2984 Chelsea. 14

**WESTERN PARTY**—Sept. 14, 9 p.m. to 1 a.m. American Legion Post 551, Dexter. 12

FOR SALE—3-bedroom home on two lots in Stockbridge. 479-6418. 15

**GARAGE SALE**—Sept. 27-28-29th, 1002 E. 10th Rd. (off Old US-42) Sylvan Center. Restaurant equipment, antiques, household articles, tools. 14

## WANT ADS

**WORK SHOE HEADQUARTERS**

Famous Red Wing Brand  
\$10.95 to \$23.95

Foster's Men's Wear 2ct

**FEMALE HELP WANTED**—Mature woman to care for elderly gentleman from 11 p.m. to 7 a.m. Phone 683-0754. 47ct

**AIRLESS SPRAY PAINTING**—Interior and exterior. Pinckney, 878-3246. 25ct

**USED TRACTOR TIRES**—Large inventory on hand. Also used passenger truck tires. Jackson Tire Brokers, M-106, M-107, Mich. Ph. 596-2925. 32ct

**TRAP SHOOT**—Chelsea Rod & Gun Club grounds. This Sunday, 10 a.m. to 1 p.m. 15

**THIS WEEK'S SPECIAL**

1956 Ford  
3/4 Ton Pick-up  
A \$295.00 VALUE

Only  
\$95.00

'68 Galaxie 500 LTD 4-door  
'68 Ford 4-door  
'68 Fairlane 500 XL Hardtop  
'65 Mustang Hard Top (2)  
'65 Galaxie 500 4-door  
'65 Ford Station Wagon  
'65 Ford 4-door  
'65 Mercury 2-door  
'64 Ford 4-Dr. Hard Top  
'63 Thunderbird  
'63 Ford 9-Pass. Wagon  
'63 Ford 6-Pass. Wagon  
'63 Dodge 4-door  
'63 Ford 2-door  
'63 Chev. Convertible  
'63 Falcon Wagon  
'62 Ford 6-Pass. Wagon  
'60 Ford 2-door

**Trucks**  
'66 Chev. 1/2 Ton  
'68 Chev. 1/2 Ton  
'58 Ford 1/2 Ton

**BEST SELECTION IN TOWN!**

**PALMER FORD**  
Phone GR 5-3286  
Open Mon., Wed. & Fri. Till 9:00 12

**REAL ESTATE FOR SALE**

**OWNER ANXIOUS TO SELL**—3-bedroom newer home. Living room, family room, large kitchen-dinette. Basement, attached garage. Gas heat, \$21,000.

**7 1/2 ACRES**—All within the Chelsea village limits. Has village water, gas and electric and 745 ft. of railroad frontage. 3-bedroom house and garage included. \$28,000.

**FOUR-BEDROOM** older home. Full basement. 2-car garage. Shady lot. \$16,000.

**BUILDING LOTS**

**NORTH LAKE AREA**—Several to choose from, \$3,500 to \$4,500 with frontage on North Lake, \$6,000.

**COMMERCIAL LOT**—West Middle Street 60'x132' adjacent to business district.

**15 ACRES OF WOODS**—\$15,000.

**CLARENCE WOOD**  
BROKER  
646 Flanders St.  
Phone 479-4603 12ct

**FRANK'S CARPET CLEANING**—Modern equipment, free estimates. All work guaranteed. Call 475-8081 or 683-9688. 18

FOR SALE—9 yearling ewes. Phone 475-8468 after 6 p.m. 12

FOR SALE—1964 Valiant convertible, 4 speed, 225 cubic inch, good condition. Phone 475-7530. 12

**PATRICK & COOK**—Free estimates on aluminum siding, gutters, awnings, additions, roofing and general maintenance. Porch railing, aluminum storm windows and doors installed. Please call Chelsea 479-4533. 11ct



"Worry, worry, worry! Ching has the bomb and my wife got a used car in the Standard Want Ads!"

**WANT ADS**

**FOR REAL DOLLAR SAVINGS**  
Be sure and see us before you buy any new or used car. Palmer Motor Sales, Inc. Your Ford Dealer for over 50 years. 2ct

**REFRIGERATION REPAIR MAN**

Excellent, permanent, full time opportunity. Start at \$3 per hour, plus complete benefits, profit sharing and retirement. Immediate discount privileges. Apply in person.

**Montgomery-Ward**  
Arborland Shopping Center 50ct

FOR TRACTORS and equipment. Also New Holland machinery. Sales and service. Cobb & Schreier, Stockbridge. Ph. Ulysses 1-4029. 49ct

**Septic Tanks and Drain Fields**

INSTALLED TO COUNTY CODE SPECIFICATIONS  
Septic tanks from 800 gal. to 2,000 gal. available for prompt installation.

**HILLTOP PLUMBING**  
BOB SHEARS  
301 S. Main Phone 479-3851 30ct

**FREE ESTIMATES** on bricklaying, fireplaces, basements and all types of cement work. Carpentry and roofing. Call 479-6418. 51ct

**Custom Slaughtering**

By Appointment  
Complete Food and Meat Processing Service.

**Frozen Food Lockers**

**Frigid Products**  
LOCKER DEPT.  
Phone GR 5-8280 15ct

**HAMMOND ORGAN** teachers wanted to teach in their own homes. Call Grinnell Brothers, Ann Arbor, 682-5687. 34ct

**NOTICE**—Morality buildings now offering winter discounts on all pole buildings. Why wait—Buy now and save. For free estimates call Petersburg, BR 9-1855; collect 31ct

**G. G. HOPPER**  
Building Contractors  
Phone GR 5-5581  
Gregory 498-2148 40ct

**WANT ADS**

**WOLF RIVER** and Wealthy apples and tomatoes for sale. Phone GR 9-3696. 11

**ALLSTATE INSURANCE**

Phone Even. or Week-ends for LIFE • HEALTH • HOME AUTO • BOAT • COMMERCIAL LIABILITY  
**N. H. MILES, Agent**  
GR 5-8334 12

**REAL ESTATE FOR SALE**

ON 1 ACRE—2-bedroom home, modern.

ON 8 ACRES—4-bedroom home. Basement, all modern. On black-top road.

4 MILES OUT on blacktop road, large lot, 3-bedrooms, 1 1/2 baths, modern kitchen, dining room, living room, finished-in sun parlor.

IN CHELSEA—New 3-bedroom home on large lot. 2-car garage. See this one.

230 FT. FRONTAGE on Sugar Loaf Lake, with summer home. Sleeps 10 people.

10 ACRES outside of Chelsea.

32 ACRES—4 miles west on Old US-12.

**Kern Real Estate**  
Phone 475-9568 12ct

**FOR SALE**

Dutch Boy architectural finish exterior latex white house paint, \$5.49 gal.

**FIREPLACE GRATES**  
Steel 24" \$5.49 - 27" \$5.89 - 30" \$6.79.

Cast Iron 24" \$10.89 - 27" \$11.49. Wood Baskets, black \$8.98, Brass \$12.98.

**Merkel Bros.**

**BOOK WANTED**—Senior economics book. Phone 479-7949. 12

## WANT ADS

**CAR & TRUCK LEASING**. For details see Lyle Chiswell at Palmer Motor Sales, GR 5-3271. 49ct

**CLOGGED SEWER**

**Reynolds Sewer Service**

Free Clean Sewers Without Digging  
Drains Cleaned Electrically  
**FREE ESTIMATES**  
**3-YEAR GUARANTEE**  
Phone Ann Arbor NO 2-5477  
Sewer Cleaning In Our Business—Not a Sideshow! 38ct

**VACUUM CLEANERS**—Electrolux authorized sales and service. James C. Cox, Manchester. Ph. 428-2931 or 428-8321. 42ct

**Electronic Technicians**

Must be high school graduate, completion of 2 years electronics school or equivalent in military electronics training and experience required.

**Shipping Clerk and Stock Clerk**

Applicants must be mature, energetic, have chauffeur license, and be high school graduate. Previous rough carpentry and truck driving experience desirable.

**CONTACT MR. JOE PERNA**  
**Applied Dynamics**  
7800 Huron River Dr.  
Dexter, Mich.  
Phone 428-4671

An Equal Opportunity Employer 10ct

**PIANO TUNING**, Chelsea and area. Facilities for reconditioning and rebuilding. Used piano sales; reconditioned grands and verticals. E. Eklund, 426-4429. 50ct

**FACTORY HELP WANTED**—All categories. Apply in person. Fortune Industries, 11770 Dexter-Chelsea Rd., Chelsea. 42ct

FOR SALE—Ludwig snare drum and stand, complete with traveling case, practice pad and sticks. Call 479-5181. 12

**Teenage and Adult Ballroom Dance Instruction**

Enroll Now  
For Fall Classes  
For Information call  
**Jerry & Tonna Heller**  
475-7382 12

**Complete Line of Farm equipment, concrete silos, barn equipment, POST buildings**

**FOR A BETTER BUILT BUILDING AT A FAIR PRICE**  
Contact  
**John Livermore**  
517-822-8258

**Sharon Valley Builders**  
Grass Lake, Mich. 49240 12

**Fertilize Your Lawn Now For Maximum Tillering**

**SCOTTS TURF BUILDER**  
**Chelsea Hardware**  
GR 9-6311 12

FOR SALE—1968 S. Proof sets, also 7 different Jim Beam bottles. Call 475-8493 after 5 p.m. 12

**EXCELLENT DOWNTOWN DEXTER** retail or business office location, air conditioned, newly remodeled basement available. Window frontage on Main Street. Call NO 2-9722. 18

## WANT ADS

**SIDING, ROOFING and Remodeling** since 1938. Wm. Davis. Phone 1-484-2538, Ypsilanti. 14

FOR ALL your petroleum needs contact Jerry Satterthwaite, your Ashland Oil Agent. Phone 475-8042. 5ct

**HELP**—Reliable, experienced senior girl desires babysitting. 475-8270. 12

**TRAP SHOOT**—Chelsea Rod & Gun Club grounds. This Sunday, 10 a.m. to 1 p.m. 15

**WANTED TO RENT**—House or duplex, preferably near town. Please call 479-7462. 12

**TRAP SHOOT**—Chelsea Rod & Gun Club grounds. This Sunday, 10 a.m. to 1 p.m. 15

**12 Acres OF VACANT LAND**

**CHELSEA SCHOOL DISTRICT**  
\$9,000, with only \$900 down

**Ehman & Greenstreet**  
**BROKERS**  
Ypsilanti HU 2-3484  
Evenings or week-ends  
HU 3-9775  
or HU 2-0064 12

**A-1 Farm Topsoil Fill Dirt, Base Sand Bank Run Gravel Bulldozing**  
Phone 475-4381 14

**PART OR FULL TIME** hostesses, waitresses and kitchen help. Paul Burman, Jackson at Zeeb Rds., NO 2-6941. 12

**TEACHER**—Piano and organ; Mrs. Violet G. Steinbach, corner Jackson and Steinbach Rds. 14

**MALE OR FEMALE** full or part-time—Domestic, baby sitting, live-ins, receptionists, cooks, office secretaries, typists, nursing. Phone 683-2305. 14

**RENT** new Host. Clean carpets without water. Use rooms instantly. Market Bros., 1211 Main St. 13

FOR SALE—Yardman, pool, 25" power riding mower in good condition, with snow blade, \$150. Call GR 9-6121, w. thb. 13

419 Wilkinson St. Call GR 9-6121. 13

**DAD**—Sign up your son for Fun, Pass and Kick. Boys through 19. Palmer Motor Sales. 12

**WILL BABYSIT** in my home, days, or will care for children by the hour while mothers shop, etc. Phone 475-8738. 12

**FOR SALE**—Boy Scout uniform, regular size 14 for \$4.50. Summer size 16 for \$3.50. Bissel electric broom, like new, \$13. Phone 475-7453. 12

**WILL DO** baby-sitting in my home. Day only, 1 or 2 children. Call 475-7549. 12ct

**ST. MARY'S** Bake sale Saturday, Sept. 14 at K. of C. hall from 10 a.m. to 1 p.m. w. thb. 12

**HEARTS OF GOLD** melons will be for another week. Waterford at Bush Rd. 12

**130-ACRE FARM** near Manchester, beautiful wide stream could make a 30-acre lake. Good 4-bedroom home. Buildings need paint, but reasonable. Ph. 769-5630, Ann Arbor or 428-8120, Manchester. 15

FOR SALE—1962 Falcon station wagon, 4 new tires, fair condition. Darrel Satterthwaite, 479-2076. 13

**NOW TAKING** applications for carrier boys in Chelsea for Detroit Free Press routes. Apply Donald H. Thomas, local distributor for Detroit Free Press. Call 475-8350. 11ct

FOR RENT—2-bedroom upstairs unfurnished apt. Immediate possession. Call after 5 p.m., 475-8521. 12

**HELLER ELECTRIC**

Licensed Electrical Contractors  
ALL TYPES OF WIRING  
(No job too big or too small)  
**DAY OR NIGHT**  
CALL GR 9-3816  
20640 Sager Rd., Chelsea

**Reputation**  
is built upon  
the words of others  
—and merited by  
performance.

**Staffan Funeral Home**  
"Funeral Directors for Four Generations"  
124 PARK STREET PHONE GR 5-4417

**CALL 475-8360**  
For  
**Detroit Free Press Delivery Service**  
Rural or City  
**DON THOMAS, SR.**  
215 Madison, Chelsea  
Call after 6 p.m.

**- FOR SALE -**

2 LOTS on Spring Lake.  
MODERN 4-BEDROOM Chelsea home. 2-car garage. In excellent condition.</







## Community Calendar

Chelsea Camera Club meeting Sept. 17 at 7:30 p.m. at Sylvan Township Hall. Al Brown will show slides taken in Alaska for season's beginner. Members bring three vacation slides. Visitors welcome.

North Sharon Bible Church will hold a pot-luck supper, Sept. 18 at 6:30 p.m. Following the supper at 7:30 p.m. will be speaker Don Yerington, missionary from Brazil. He will be showing slides of his work. Everyone is welcome.

The Chelsea Social Service will counsel with persons having financial or domestic problems and give limited monetary assistance. Call 475-4881 or come to the office on the second floor of the Chelsea Community Farm Bureau building, Tuesdays and Thursdays 2-5 p.m.

Gamma Mu of Beta Sigma Phi social and service society, Sept. 15 at the home of the president, Mrs. Don Alexander, at 8 p.m.

Esther Chapter of Congregational church will meet Sept. 12 at 8 p.m. at the church.

Rogers Corners Farm Bureau Friday, Sept. 13, 8 p.m., at home of Mr. and Mrs. Loren Koenigster, Fletcher Rd.

Sylvan Neighborhood Club at the home of Mrs. Jack Harrington Sept. 19 at 2 p.m.

Woman's Relief Corps Monday, Sept. 16 at 7:30 p.m., Sylvan Town Hall.

Freedom Ideal Homemakers at home of Mrs. Loretta Kruger Friday, Sept. 13 at 1:30 p.m. Note change of date.

Temple Building Association of the Rebekahs special meeting Thursday, Sept. 12 at 7:30 p.m. All members are requested to attend. The fall meetings of Rebekah Lodge will begin Sept. 17 at 8 p.m.

Chelsea Rod and Gun Club dance Saturday, Sept. 21, \$3.00 per couple. See Rolly Spaulding for tickets.

Past Matron and Past Patron picnic at the Masonic hall Sept. 22, 6:30 p.m. Bring own dish to pass and table service.

Jerusalem Farm Bureau with Mr. and Mrs. Jess Miller, Sept. 12 at 8:30 p.m. Refreshments and collection.

TOPS (Take Off Pounds Sensibly) meetings are held every Wednesday at 12:30 noon at 902 McKinley, Chelsea. Women or girls interested in joining this club may call GR 5-8352 or 475-8864.

Chelsea Community Farm Bureau Thursday, Sept. 12 at 8 p.m. at Sylvan Town Hall.

American Legion and Auxiliary hospital equipment available by contacting either Mr. or Mrs. Eugene Martin, at 475-5867 after 4 p.m.

Cards every Thursday afternoon at Korner House.

Inquiries regarding the Chelsea blood bank may be directed to Harold Jones of Central Fibre Products in the event that Mrs. Dudley Holmes is unavailable.

**Kathy Fulks Enrolled in Albion Freshman Class**

Kathy L. Fulks, daughter of Mr. and Mrs. Athel Fulks of 405 Madison St., will be one of more than 600 new freshmen expected at Albion College.

Kathy will begin classes Sept. 20. Albion officials feel that this is one of the best classes to matriculate there since more than 80 percent of the incoming students were from the top quarter of their high school classes.

## DEATHS

**Mrs. Emory H. Conk Dies Suddenly Saturday At Ann Arbor Hospital**

Mrs. Emory H. (Hilda) Conk, of 518 Garfield St., died suddenly Saturday at St. Joseph Mercy Hospital, Ann Arbor. Mrs. Conk was born Jan. 9, 1912 to Alfred and Edna M. Lindgren Carlson, in Bemidji, Minn.

She was married to Emory H. Conk June 27, 1931 in Waukeon, O. He preceded her in death Dec. 8, 1963.

Mrs. Conk was employed by Federal Screw Works.

She is survived by a daughter, Mrs. Gary (Sharon) Wortley, Chelsea; three sisters, Mrs. Lero (Ethel) Buehler, Chelsea; Mrs. H. T. (June) Crotty, International Falls, Minn.; and Mrs. Ralph (Hannah) Crossdale.

Services were Tuesday at 2 p.m. at Staffan Funeral Home in Chelsea with the Rev. Warner H. Siebert officiating. Burial was at Oak Grove Cemetery.

## Jaycees Attend District 26 Fall Meet in Milan

Chelsea Jaycees traveled to FCI Milan to attend the annual District 26 fall meeting, Sept. 3. A steak dinner was served by the FCI Chapter to about 80 Jaycees from Manchester, Ypsilanti, Saline, Dexter, Ann Arbor and Chelsea.

Guest Speaker was Bob Padgett, president of the Michigan Jaycees. Boy Scout awards were presented to those chapters that increased their membership 25 percent during 1967-68. They included Ypsilanti, Dexter and Saline. A special award was presented to Chelsea's past District 26 vice-president, Ron Branham for his outstanding work with the local chapters within the District.

Those Jaycees from Chelsea who attended are: Walt Brown, Don Proctor, Bob Undergraff, Lloyd Swan, Vasant Bhurud, Ron Branham, Jerry Blough, St. Hopkins, Art Steinaway, Doug Robeson and Tom Dunlap. The travel trophy for the largest membership from any one chapter in attendance at the meeting was won by Milan FCI.

## BIRTHS

A son, Gary William, Jr., to Mr. and Mrs. Gary W. Johnson, Sept. 7.

A daughter, Melinda Ann, Sept. 3, to Mr. and Mrs. Norman D. Fletcher.

A son, Clayton Lee, Sept. 5, to Mr. and Mrs. Virgil L. Clark.

A son, Jeffrey Robert, Sept. 5, to Mr. and Mrs. Robert W. Wheaton.

A son, Gary William, Jr., Saturday to Mr. and Mrs. Gary William Johnson, Sr., of 8028 Werker Rd.

A son, Thomas Edward, to Mr. and Mrs. Ricki Ash, 310 W. Middle St.

A daughter, Kristina, to Mr. and Mrs. Sophocles Mattoff, 150 Van Buren St.

A daughter, Latrisha Lynn, to Mr. and Mrs. Odie Richardson, 320 North St.

**VETOES COTTON BILL**  
President Johnson has vetoed legislation aimed at prohibiting imports of extra-long staple cotton from countries not having diplomatic relation with the United States.



THE PUBS SMILE PROUDLY over their fast league all-stars by a narrower margin of 5-4 pitch league champion trophy after defeating the league all-star line-up Aug. 25, by a score of 3-1. The Wolverines, slow pitch league champs, defeated

## Area Scouts Plan 3-Day Camp Session

Boy Scouts are getting together to "show their stuff" Sept. 27, 28, 29 at Hudson Mills Park outside of Dexter.

The Council Camporees will be the biggest event ever held by Portage Trails Council as Cub Packs, Boy Scout troops and Explorer-Posts present the entire program of "scouting" to boys, parents and the general public. Highlight of the camporee will be the great pageant planned for Saturday night. This will be an hour-long show depicting the history of scouting in Portage Trails Council. The actors will be Cubs, Boy Scouts, Explorers, and leaders.

In addition to the "Scouting Fair," planned for Saturday afternoon, there will be a Cub Scout Field Day, and an Explorer Cub Field Day will be held from 2 to 5 p.m. Saturday, Sept. 28. The units will demonstrate various Cub activities, followed by a picnic supper, campfire, and pageant.

At the same time, from 2 to 5 p.m., in a special area set aside, the Explorer Posts will be presenting activities which show what Explorers do, and what "Exploring" is.

## School Enrollment

(Continued from page one)  
The largest enrollment increases seem to be in the junior high and high school areas, with an increase of about 50 pupils each.

South Elementary shows an increase of about 25, and North Elementary has the same number as last year.

## School Board Briefs

(Continued from page one)  
building and property shall be placed in a building and site fund. All ayes.

The administration has been authorized to proceed with the details involved in the proposed sale, including the appraisal procedure, review of the appraisal recently obtained and the soliciting of bids. The administration is to report back to the Board the correct procedure previous to the sale.

Motion by Koenn, supported by Lancaster to instruct the business manager to apply for an NDEA title V-A grant for guidance and counseling. All ayes.

Motion by Lewis, supported by Koenn to obtain a bus on loan from Classroom's Inc., of Lansing, until the district's new buses arrive. All ayes.

Motion by Taylor, supported by Lancaster to approve "Plan A" with the First Agency of Kalamazoo for student insurance for 1968-69. Cost to be \$2. All ayes.

Motion by Lancaster supported by Hopkins that sophomores who participate in three sports may waive the second year of physical education. All ayes.

The new date for the Robert Foster dinner will be Oct. 9 at 8 p.m. at the Canopy Restaurant in Brighton.

**FREE! COLOR**

**OR BLACK AND WHITE 5x7 PHOTO ENLARGEMENT**

Beautiful, glossy enlargement free with every roll of black and white or Kodachrome film brought in for developing and printing. Save your photo envelope. It entitles you to a free 5 x 7 photo enlargement.

Bring in your film today!

A Gold Seal Photo Special  
**BUDGET-WISE STORE**  
"Chelsea's First Discount Store"  
116 S. MAIN ST. PHONE GR 9-1611

## Lamaze Childbirth Preparation Assoc. Will Show Film

Lamaze Childbirth Preparation Association is presenting the film "Birth Day" on Friday, Sept. 20 and Monday, Sept. 23 at 8 p.m. in the St. Joseph Mercy Hospital Auditorium.

The two women shown delivering babies have been prepared by the psychoprophylactic method of childbirth and actively participate in bringing their babies into the world.

There will be a registered nurse trained in the Lamaze method and a member of the lay organization in hand to introduce the film and answer question.

For further information call Mrs. William Rorvath at 663-2518.

Even a new broom won't sweep clean unless someone uses it.

## Five-Ton Dump Truck Totalled Tuesday in Crash on Old US-12

Flen Sistrunk, 28, was taken to St. Joseph Mercy Hospital when the dump truck he was driving went out of control on Old US-12 Tuesday afternoon.

According to Chelsea Police Sistrunk, of 1104 Brooks Rd., Arbor, was driving a 1968 five-ton dump truck east on US-12 near Freer Rd., when lost control of the vehicle. It went to the right shoulder of the road and rolled over on its side.

The blacktop was wet and slick, and Sistrunk was on a sharp curve. The truck was a total loss.

Mrs. David Mohrlock is a patient at St. Joseph Mercy Hospital.

## ATHLETIC EVENTS OF THE WEEK FOR CHELSEA HIGH SCHOOL

Friday, Sept. 13—Varsity Football .....at Stockbridge, 7:30 p.m.  
Saturday, Sept. 14—Junior Varsity Football .....at Stockbridge, 1:30 p.m.



**NEW FALL SUITS**

Have Arrived!

We stress fine tailoring, with custom-like fit in the suits we suggest for dressing up the fall season. You'll find every favorite shape well represented in quality fabrics—and always priced right!

From \$55.00 to \$80.00

**Foster's Men's Wear**

**Gambles**  
The Friendly Store

**SEPTEMBER COUPON SALE!**

**WHY PAY MORE?**

**'Grade A' Interior LATEX \$2.99**  
Gallon  
Paint Now—Pay Later  
NO MONEY DOWN

easy-painting, fast-drying, water-cleanup latex at this low, low price! Covers up to 400 sq. ft. beautifully. In white and 4 colors.

LOWEST PRICES ON ALL PAINTING NEEDS!

**LONG LIFE LIGHT BULBS**  
Limit 11¢ Each  
Budget priced—Dependable, pre-tested bulbs made in U.S.A. 60, 75 and 100-watt.

**MEN'S CHORE GLOVE VALUE**  
Compare at 58¢ **37¢** Pr.  
Sturdy cotton—nap out for extra wear. Med. 95-9555-9 Lined Leather Gloves. \$1.66

**ARTISAN 2-SPEED Sander-Polisher**  
NO MONEY DOWN **\$34.95**  
7" tool provides professional results. 1/2-HP burnout-proof motor, 3-position switch and needlepoint bearings. 10-406

**COOKIE PAN TWO-SOME**  
Compare at \$1.59 **87¢**  
For cookies and pizzel. 11x16 1/2"D. and 12x16 1/2"D. Good quality tinware. 10-406

**DYMO LABELER**  
Reg. \$3.98 **\$2.99**  
REFILL CARTRIDGE—88¢

**LEAF RAKE**  
Reg. 69¢ **49¢**

**Caulking Compound**  
Reg. 45¢ **29¢**

**GE SEALED BEAM**  
4 headlamp system. Reg. \$1.49 **79¢**

**Always Better Buys At . . . GAMBLES**

## Season Athletic Tickets For ALL Chelsea Home Games Football - Basketball - Wrestling

**ADULTS \$10.00**

Price if bought separately

\$22.50

**STUDENTS \$6.00**

Price if bought separately

\$11.75

Available from Senior High Athletes or at Strieter's, Foster's, Chelsea Drug Store

By Mail: Athletic Director, Chelsea High School, Chelsea, Mich. 48118

Make checks payable to Chelsea School District



# AGRICULTURE In Action

by M. L. Wood  
SPECIAL FARM REPORT

## Politicians and The Family Farm

No matter what politicians may say in the heat of this election year, corporate farms are not gobbling up family-type farming operations. This may come as a shock to some, but the number of farms in this country now operated by families appears to be in excess of 97 percent!

What was the figure 10 years ago?—about the same, 97 percent. What was it 20, 30, 40, and 50 years ago?—about the same, 97 percent. In Michigan, such corporate farms have been estimated by agriculture economists as representing something less than one-tenth of one percent of the total.

A recent study by the U. S. Department of Agriculture on corporate farming in 22 states, including Michigan, shows that such corporations make up less than one percent of the commercial farms in the area, operate less than seven percent of the land and sell only about four percent of the farm products.

Helping to confuse the issue (besides the obvious politics of "defending" the family farm) is the argument concerning who is the farmer and what is a farm. Further, more than 70 percent of the corporations listed in the most recent study, were still family owned and operated, but incorporated for a number of business reasons.

Non-family corporations are frequently tied to college experiment stations, to Boys Towns, demonstration farms operated by farm machinery manufacturers, by farm chemical and feed firms as test operations, and by prisons. Currently, they make up only about one percent of the total farm holdings, nationally controlling about five percent of the land. Their encroachment rate is nothing compared to millions of acres of land taken out of cultivation for ever-expanding roads, airports and urban sprawl. "The fastest growing segment in America can best be described as 'rural, non-farm.'"

All of which is little comfort to the politician forced to run this election year on merits of the current farm program. He may find it much simpler to talk instead of his concern for the family farm in an attempt to divert attention from low farm prices brought about by 30 years of failure of government supply management schemes.

Careful habits will often save someone's life and the interesting part of it is that it might be yours. If that is saved.

# THE SUPERMARKET THAT'S JUST A LITTLE BIT BETTER

## Stop & Shop

14901 Old U.S.-12  
Corner at M-52  
Chelsea

"Triple R Farms" U.S.D.A. Choice

## CHUCK ROAST

Blade  
Cut

**49¢**  
lb.

Prices Effective Wednesday, September 11  
through Tuesday, September 17, 1968

Lean, Tender, Meaty  
**Pork Steaks . . . . . 59¢ lb.**

Lean, Tender, Boneless and Cubed  
**Pork Cutlets . . . . . 79¢ lb.**

Tender, Sliced  
**Beef Liver . . . . . 39¢ lb.**

Stop & Shop's Homemade  
**Pork Sausage . . . . . 49¢ lb.**

"Triple R Farms" Fresh Dressed  
**Chicken Legs or Breasts 59¢ lb.**  
(Ribs Attached)

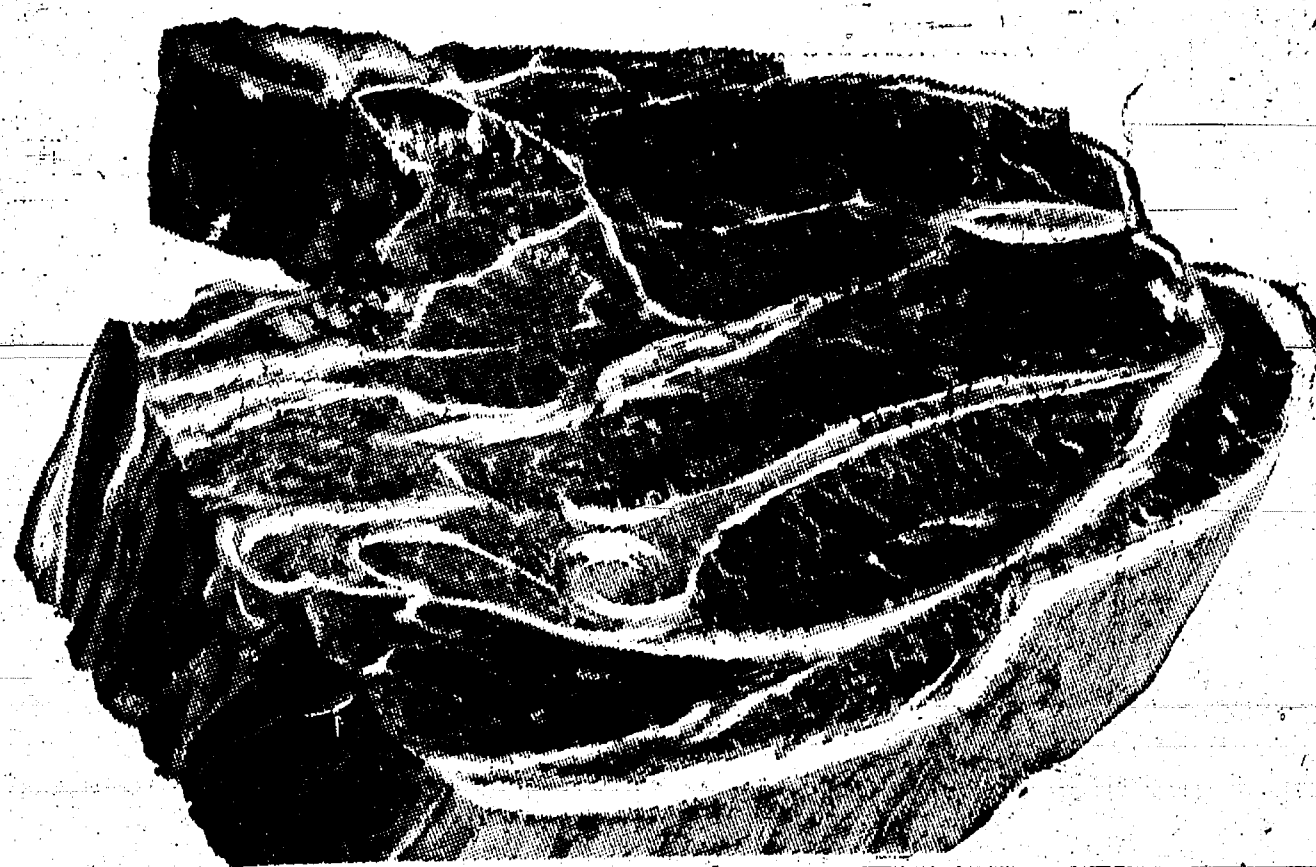
"Triple R Farms" U.S.D.A.  
**Chuck Roast . . . . . 59¢ lb.**  
Center Cut

"Triple R Farms" Lean, Boneless  
**Stewing Beef . . . . . 89¢ lb.**

"Triple R Farms" U.S.D.A. Choice  
**Ground Round Steak 89¢ lb.**

Stop & Shop's Fresh, Lean, All American Beef  
**Hamburger . . . . . 59¢ lb.**  
3-Lb. Units or More

Lean, Tender, Boston Butt  
**Pork Roast . . . . . 53¢ lb.**



## FARM FRESH PRODUCE

U.S. No. 1 Russet  
**Potatoes . . . . . 89¢**  
20-Lb. Bag

U.S. No. 1 Michigan  
**Yellow Onions . . . . . 39¢**  
3-Lb. Bag

MacIntosh  
**Apples . . . . . 59¢**  
3-Lb. Bag

Italian Prune  
**Plums . . . . . 19¢**  
Lb.

Carnival - Assorted Flavors

**ICE CREAM . . . . . 59¢**  
Half Gallon

McDonald's  
**Cottage Cheese . . . . . 27¢**  
1-Lb. Carton

Treesweet Fresh Frozen Florida  
**Orange Juice . . . . . 39¢**  
6-Oz. Cans

Our Favorite  
**Sweet Peas . . . . . 15¢**  
1-Lb. Can

Meadowdale  
**Catsup . . . . . 17¢**  
14-Oz. Bottle

Camelot American or Pimento  
**Sliced Cheese . . . . . 35¢**  
8-Oz. Pkg.

Assorted Colors Family Scott  
**Bathroom Tissues 3 \$1.00**  
4-Roll Pkgs.

Pure Granulated

**SUGAR . . . . . 49¢**  
5-Lb. Bag

Star-Kist Chunk Style  
**Tuna . . . . . 27¢**  
6½-Oz. Can

McDonald's 2% Low Fat  
**Milk . . . . . 75¢**  
Half Gallon

Camelot  
**Saltine Crackers . . . . . 19¢**  
1-Lb. Box

Zion  
**Fig Bars . . . . . 35¢**  
2-Lb. Pkg.

Franco-American  
**Spaghetti . . . . . 29¢**  
15½-Oz. Cans

Del Monte  
**Peaches . . . . . \$1.00**  
3-Lb., 13-Oz. Cans

WE  
RESERVE  
THE  
RIGHT  
TO  
LIMIT  
QUANTITIES

**OPEN  
SUNDAY**  
10 a.m. - 6 p.m.  
All Sale Prices  
Effective  
Sundays

Sorry,  
No Sales  
To Dealers

**STORE HOURS:**  
Mon., Tues., Wed.,  
9 a.m.-6 p.m.  
Thursday, 9 a.m.-9 p.m.  
Friday, 9 a.m.-9 p.m.  
Saturday, 8 a.m.-9 p.m.  
Sunday  
10 a.m. to 6 p.m.

## Aluminum Storms and Screens

Sturdy EXTRUDED  
**ALL ALUMINUM**  
Construction  
Can't Rot, Rust, Warp  
**NO PAINTING**  
Ever Needed  
Year 'round  
**SELF-STORING**  
Convenience  
All Glass Panels  
**CUSHION-SEALED**  
In super-tough plastic  
Bigger Glass Areas for  
**EXTRA LIGHT**  
and visibility  
Easy to Remove and  
**WASH from INSIDE**  
at any time  
Rustproof  
**ALUMINUM SCREENS**  
Last Longer  
Switch Screen and Glass In  
**ONLY 10 SECONDS**  
Between Seasons  
**FREE MEASURING SERVICE**

Standard Window  
**\$11.95**  
Deluxe Triple-Track  
**\$13.95**  
**CHELSEA  
LUMBER CO.**  
Dial GR-5-3391



## CROSSWORD PUZZLE

**CROSS**

1. Across
6. Certificate
11. Swiftly
12. New England state
13. Movable barrier
14. Ladies
15. Erbium
16. Nocturnal mammal
17. Bitter vetch
18. Purvis
22. Toward
23. Hint
24. Anguish
26. Anesthetic
28. Operatic adagio
29. To secure, as a vessel
30. Prosecuted judicially
31. Ardent; sym.
32. Part of a church
36. Bird's beak
38. Insect
39. Music note
40. Pit for
42. Biblical name
44. Kind of fugue
45. Color
46. Literary composition

**DOWN**

1. Stormy
2. Away from
3. Day
4. Refrigerate
5. "— pro-funde"
6. Scottish economist
7. Bottle top
8. Mature, as fruit
9. Admises
10. Individuals
13. Day of the month
16. Dim
18. Revert
20. Wide awake
21. VVV I battle site
25. Assistant
26. Original
27. Fighters
28. Relative
30. Rational
33. Assemble
34. Supine
35. Snappish
37. Prohibits
41. Cry of sheep
42. Indian mulberry
43. One thousand
46. Quaker state; abbr.

1	2	3	4	5	6	7	8	9	10
						12			
15				16				17	
18		19	20					21	22
23		25					24	26	
28	27					29			
31			32	33				34	35
36	37		38					39	
40			41			42	43		
44					45				

ceasing, milk is completely sterilized almost instantly, quickly cooled and poured into sterile containers.

A PORTABLE X-ray spectrometer that uses radioisotopes to detect lead, silver or other elements in minerals has been developed by the Atomic Energy Commission. The device can also analyze alloys and solutions for element content. The spectrometer, which weighs less than 15 pounds, employs X-rays produced directly or indirectly by radiois-

otopes emitting low-energy radia-

### RETURN TO BIKINI

President Johnson has announced plans to permit the people of Bikini to return to the Pacific atoll. The Bikinians were removed more than 20 years ago for purpose of nuclear-weapon testing. It is expected to take about two years to prepare the island to return now that they are danger-free from radiation.

Subscribe Today to The Stars

# VILLAGE TAYES

**VILLAGE TAXES**  
**ARE DUE and PAYABLE**  
At the Office of the  
**VILLAGE TREASURER, WALLACE WOOD**  
105 S. Main St., Chelsea, Mich.

---

**DEADLINE: FRIDAY, SEPT. 20, 1968**  
After Sept. 20, tax is transferred to the  
County Treasurer for collection.

---

**THERE WILL BE NO EXTENSION  
OF THIS DEADLINE DATE!**  
Hours: 9 a.m.-5 p.m. daily; 9 a.m.-2 p.m. Sat.

---


**WALLACE WOOD**  
**CHELSEA VILLAGE TREASURER**

---

**THINK!**

Structural change (of  
muscles, bones, nerves)  
precedes changes of func-  
tions in the body!

Altered function and —  
later tissue degeneration  
is DISEASE! Chiropractic  
NORMALIZES STRUC-  
TURE, CORRECTS THE  
CAUSE OF DISEASE.



DR. GEORGE N. KOFFEMAN

**CHIROPRACTIC** - The natural way to health

**Dr. George N. Koffeman**

**CHIROPRACTIC PHYSICIAN**

---

**138 East Middle St.**  
Chelsea, Mich.  
Phone 479-5241

**Tues., Thurs.:  
2 p.m. to 7 p.m.  
Sat.: 2 p.m. to 4:30 p.m.**

---

**208 Napoleon Rd.**  
Michigan Center, Mich.  
Phone PO 4-2131  
or ST-2-6262

**Mon., Wed., Fri.:  
10 a.m. to Noon, 2 to 8 p.m.  
Tues., Sat.: 10 a.m. to Noon**

---

**FULL SPINE MANIPULATION  
& UPPER CERVICAL SPECIFIC ADJUSTING**

---

Literature available without charge on low-back conditions, headaches, sinus trouble, accidents (whiplash, etc.), your heart, stomach, liver, gall bladder, etc.

**Phone, write or call in person. No obligation.**



# BOWLING NEWS

## Chelsea Nite Owl League

Standings as of Sept. 9

	W	L
Dinos	4	0
No. 12	4	0
Manaw Crop Serv.	3	1
Men's Wear	3	1
Garage	2	2
Tavern	2	2
Drug	1	3
Son Barber	1	3
Std. Service	1	3
Lake Store	0	4
Mustangs	0	4

Series: D. Murphy, 582; M. Eder, 578; D. Eder, 526; D. O. Hansen, 532; R. Eder, 524; B. Botar, 519; J. Gak, 518; G. Packard, 516; R. Foster, 515; B. P. Frit, 508; A. Kieis, 502; G. Packard, 210; L. Kusterer, 208; G. Packard, 206; G. Packard, 204; G. Packard, 203; D. Murphy, 200.

## Guys and Gals

### Mixed League

Standings as of Sept. 5

	W	L
No. 9	4	0
Chelsea Lanes	3	1
Plus Two	3	1
Star Lake Resort	2	2
No. 1	2	2
Barber Shop	1	3
CS	1	3
Barber Shop	0	4

Men's high game: N. Simpson, 199.  
Men's high series: N. Simpson, 324.  
Men's 150 or over games: E. Anger, 151; M. Sprague, 153; Pardon, 161-154-151; B. Fritz, 165; P. Huston, 166; N. Simpson, 167-199-158; P. Elliott, 177.  
Men's 425 or over series: P. Elliott, 489; N. Simpson, 524; B. Fritz, 488; P. Huston, 428; P. Pardon, 466; E. Myles, 425.  
Men's high game: A. Sannes, 175.  
Men's high series: A. Sannes, 175.  
Men's 175 or over games: J. Kieis, 176; J. Elliott, 203; E. Anger, 201-190; J. Tapp, 182; Pardon, 190; A. Sannes, 191-188; D. Fritz, 202; R. Huston, 188; G. Kiewasser, 184-189; B. Fritz, 175.  
Men's 500 or over series: G. Kiewasser, 552; A. Sannes, 600; Fritz, 512; R. Huston, 522; E. Anger, 500.

## Chelsea Suburban League

Standings as of Sept. 4

	W	L
Chelsea Lanes	4	0
Dana Corp.	4	0
Western & Southern Ins.	3	1
Kresge Arborland	3	1
G. A. Sales	3	1
Artex Roll-on's	3	1
Poor Mobil	1	0
Patty Ann Shoppe	1	0
Waterloo Garage	1	0
State Farm Insurance	1	0
Dancer's Dept. Store	1	4
Pittsfield Plastics	1	4

All-spore game-180, G. Wilkerson.  
425 and over series: B. Hafley, 453; P. Elliott, 429; P. Huston, 456; B. Fritz, 436; L. Keezer, 436; N. Packard, 454; D. Fouty, 478; N. Collins, 493; M. L. Westcott, 470; G. Wilkerson, 501; L. Beeman, 441; G. Klink, 455; D. Norris, 445; Betty Smith, 512; D. Hughes, 443; J. Riehmiller, 456.  
150 and over games: B. Hafley, 152-177; M. Breitenwischer, 158; M. Neal, 154; R. West, 152; P. Elliott, 182; P. Huston, 154-179; B. Fritz, 160; D. Fouty, 177-154; N. Collins, 172-158-163; W. Liebeck, 150; M. L. Westcott, 161-184; D. Sannes, 154; G. Wilkerson, 180-175; A. Beeman, 158; J. Klink, 158-167; G. DeSmith, 154; D. Norris, 165-163; B. Smith, 185-177-160; D. Hughes, 167; K. Snyder, 160; J. Riehmiller, 157-151.

## Chelsea Women's League

Standings as of Sept. 4

	W	L
Chelsea Cleaners	4	0
Jiffy Mixers	4	0
Foster's Men's Wear	3	1
Chelsea Grinding	3	1
The Pub	2	2
Palmer Motor Sales	2	2
Schneider's	1 1/2	2 1/2
Wolverine Bar	1	3
Chelsea Milling	1	3
Dancer's Dept. Store	0	4
Zephyr Service	0	4

Series of 450 or better: D. Judson, 520; G. Baczynski, 490; L. Orlovski, 483; R. Hummel, 478; A. Turner, 475; H. Morgan, 471; P. Poertner, 466; D. Alber, 458; G. Kuhl, 467; B. McKinley, 457; S. Ringe, 455; B. Parish, 454.  
Games of 150 and over: D. Judson, 192-168-160; P. Shoemaker, 190; R. Hummel, 181-159; A. Turner, 180-157; B. McKinley, 176-133; L. Orlovski, 174-141; P. Poertner, 174; H. Morgan, 170-156; G. Kuhl, 170; G. Baczynski, 169-166-153; R. Lutovsky, 169; P. Parish, 166-154; D. Alber, 164-155; N. Meabon, 160; S. Timmerman, 158; N. Kern, 156; M.E. Sutter, 156; D. Graden, 155; M. Paul, 155; M. Ritter, 153; S. Ringe, 154-153; D. Miller, 154; M. Scott, 154; C. Stoffer, 154; D. Frisbie, 153; D. Fouty, 151.

## Chelsea Lanes Mixed League

Standings as of Sept. 6

	W	L
Chelsea Lanes	4	0
Dana Corp.	4	0
Wolverine No. 2	3	1
Rabbit & Althouse	3	1
H. & H.	3	1
Gephart & Barkley	2	2
Poor-Fitz	2	2
Wolverine No. 3	1	3
Doody & Turner	1	3
Lyndon Color Lab	1	3
Wolverine No. 1	0	4
Johnson's Tool Shop	0	4

Men's 175 and over: R. Hutzler, 223; J. Harro, 193-213-190; G. Burnett, 208; M. Poertner, 205; M. Rabbitt, 200; R. Doody, 193; B. Robertson, 191; D. Sindlinger, 178; W. Steinway, 178.  
Men's 475 and over: J. Harro, 506; R. Hutzler, 553; G. Burnett, 530; M. Poertner, 531; R. Doody, 528; M. Rabbitt, 515; B. Robertson, 500; D. Sindlinger, 496; D. Longworth, 495; A. Sannes, 482; R. Kieis, 476.  
Women's 150 and over: M. Powell, 177-200; P. Fitzsimmons, 154-186; P. Poertner, 183-165; F. Gephart, 161-182-178; M. Robertson, 170; A. Sindlinger, 173; N. Althouse, 158-172; J. Barkley, 171; R. Johnson, 170; H. Morgan, 160-168; K. Lyndon, 157-152-163; L. Alexander, 192-158; J. Burnett, 161-155; J. Hutzler, 160; J. Longworth, 159; V. Harro, 158; J. Rabbitt, 157; E. Harro, 153.  
Women's 450 and over: M. Powell, 522; F. Gephart, 501; P. Poertner, 494; H. Morgan, 493; P. Fitzsimmons, 479; N. Althouse, 473; K. Lyndon, 472; J. Burnett, 465; L. Alexander, 464; J. Longworth, 450; R. Johnson, 450.

## Tri-City Mixed League

Standings as of Sept. 6

	W	L
Chelsea Cleaners	4	0
Don's Standard	4	0
Eibler Frisinger, St. A.	3	1
Sprague Buick & Olds	3	1
Flintstone's	3	1
Griffith & Riggs	2 1/2	1 1/2
Odd Balls	1 1/2	2 1/2
3-D	1	3
Wolverine Early Birds	1	3
Clear Lake	1	3
Wolverine No. 1	0	4
Cavanaugh Lake	0	4

Women, high series: N. Hocking, 456; D. Sannes, 459.  
Women, high games: L. Jarvis, 156; M. Ashmore, 150-158; B. Parish, 169-167; G. Dettling, 168; N. Miller, 170; N. Hocking, 160; L. Cole, 160; D. Sannes, 153-157; D. Fouty, 167.  
Men, high series: B. Stone, 514; C. Parish, 513; B. Cruise, 553; W. Griffith, 558; L. Hocking, 535; A. Sannes, 536; R. Worden, 582.  
Men, high games: B. Cruise, 225; A. Sannes, 204; R. Worden, 203-200.

## Junior House League

Standings as of Sept. 5

	W	L
Mid-state Finance	7	0
Wolverine	7	0
Toyer Automotive	5	2
Jambles	5	2
Parish Cleaners	5	2
I-D Sales and Service	5	2
The Pub	2	5
Palmer T-Birds	2	5
Wonder Bar	2	5
Jiffy Mixes	2	5
N. Amer. Rockwell-Std.	0	7
Team No. 12	0	7

Over 200 games: J. Stoffer, 231; G. Gaeth, 223-202; P. Boham, 219; C. Popovich, 215; R. A. Ringe, 203.  
Over 600 series: G. Gaeth, 612.  
Over 500 series: J. Stoffer, 574; P. Boham, 574; T. Wisniewski, 569; N. Fahrner, 561; H. Morton, Jr., 535; P. Dickinson, 534; S. Hopkins, 528; R. H. Ringe, 526; A. Hansen, 526; B. Yocum, 523; J. Harrook, 520; A. Fleischman, 518; D. Kyte, 518; G. Fouty, 510; C. Popovich, 507; L. Salyer, 500.

## Senior House League

Standings as of Sept. 9

	W	L
Dana No. 2	4	0
Wolverine Bar	4	0
Seitz's Tavern	4	0
Chelsea Grinding	3	1
Murphy's Barber Shop	2	2
Parish Cleaners	2	2
G. E. Boys	2	2
Spaulding Chevrolet	2	2
Sylvan Center	1	3
Dana No. 1	0	4
Wonder Bar	0	4
Schneider's Grocery	0	4

200 games and over: M. Poertner, 221; R. Fike, 201; W. Brown, 207; S. Hopkins, 201; H. Pennington, 200; S. Slane, 207; C. White, 212; L. Hocking, 201; G. Lawrence, 200.

# SPORTS CORNER



rence, 215; M. Sweet, 211; R. Eder, 215; D. Coppertoll, 204; J. P. Jones, 233; G. Knickerbocker, 202.  
500 series and over: M. Poertner, 509; R. Fike, 543; W. Moats, 510; A. Hansen, 501; L. Hess, 529; E. Dennis, 502; W. Brown, 571; S. Hopkins, 574; T. Wisniewski, 515; H. Pennington, 530; L. Keezer,

537; R. Bauer, 519; B. Ousley, 500; T. McClear, 558; B. Elsenbolsen, 542; R. Kiel, 528; R. Spaulding, 519; G. Miller, 533; C. White, 560; L. Hocking, 506; G. Lawrence, 580; C. Schneider, 511; M. Sweet, 546; R. Eder, 520; G. Burnett, 533; J. Miller, 540; D. Coppertoll, 561; A. Clemes, 538; H. Burnett, 573; J. P. Jones, 590; V. Hafley, 502; J. Harrook, 528; R. Hutzler, 548; G. Knickerbocker, 507.

## Rolling Pin League

Standings as of Sept. 10

	W	L
Moppy Uppers	3	1
Coffee Cops	2	2
Jolly Mops	2	2
Pots	2	2
Kitchen Kapers	2	2
Egg Beaters	2	2
Dish Rags	2	2
Kookie Kutters	2	2
Grinders	2	2
Spooners	2	2
Brooms	2	2
Mixers	1	3

140 games or over: K. Brett, 142; E. Harmon, 144; P. Patterson, 157; D. Butler, 154-143; A. Steinway, 147; A. Eisele, 150; W. Landwehr, 147; J. Rabbitt, 152-144; R. Cook, 143; K. Del Prete, 152; G. Brier, 150-146; E. Reynolds,

## Chelsea Rod & Gun Club

### Trap Shoot

Results as of Sept. 8  
Out of Possible 25

	Score
Bill Clark	24
W. Perry	21
D. Whitaker	20
G. Whitaker	20

Polish chrome faucets in kitchen and bathroom at least once each week until they sparkle and shine. They'll corrode and rust less easily.

# Learn the secrets of beer cookery

Find out how to make delicious everyday dishes with beer—such as beer meat loaf, beer chicken, beer sausages and beer cake. And then there are such gourmet treats as rarebits and Carbonnades Flamandes. Beer cookery is as traditional as yesterday... as modern as tomorrow. Beer adds a real flavor treat.

Send in this coupon for our pamphlet of free recipes on cooking with beer.

I'm interested in recipes for cooking with beer. Send me my free pamphlet.

Name \_\_\_\_\_

Street \_\_\_\_\_

City \_\_\_\_\_

State \_\_\_\_\_

UNITED STATES BREWERS ASSOCIATION, INC.  
535 Fifth Ave. New York, N.Y. 10017

**YES**

WE ARE MAKING LONG-TERM FARM REAL ESTATE LOANS

SEE US

**Federal LAND BANK Association**

665-6139 2221 Jackson Ave. Ann Arbor, Mich. 48106 P. O. Box 1006

**TRAP SHOOT**

Chelsea Rod & Gun Club Grounds

Every Sunday, Sept. 8 thru Oct. 6

Shooting 10 a.m. to 1 p.m. PUBLIC INVITED

PRIZES

**BOWL for the fun of it...**

Having Fun Lately? Bowling Is a Ball!

Put some fun in your life... Bowl for laughter and health at our modern, well-equipped lanes with rarely a wait. Bring the gang down!

**CHELSEA LANES**  
1180 M-52 Phone GR 3-8141

**MID-STATE FINANCE CORP.**

\$25 to \$1,000 For Any Worthwhile Purpose

See or Call **FRANK HILL** at 475-8631

111 PARK STREET CHELSEA, MICH.



# How soon will she marry?

Chances are, she'll marry younger than her mother married. And start raising a family sooner. Will she be ready for the responsibilities of marriage and motherhood? Unfortunately, many girls are not. And one sad reason, according

to official reports, is that they have poor nutritional habits. And the result, too often, is lasting damage to young mother and child. Most lacking: Vitamin C and calcium.

Fresh milk, of course, is the richest source of calcium. So necessary for sound bones and teeth. It is essential to everyone's diet—male or female, young or old. But especially girls who may soon be mothers.



Michigan Milk Producers Association



## + Services in Our Churches +

**ST. MARY'S CATHOLIC CHURCH**  
The Rev. Fr. Francis Wahowiak  
Saturday, Sept. 14—  
4:50-5:30 p.m.—Confessions.  
Sunday, Sept. 15—  
Masses at 6:30 a.m., 8 a.m., 10 a.m. and 11:30 a.m.  
Monday, Sept. 16—  
10:45 a.m.—Mass in school hall.  
Tuesday, Sept. 17—  
8:00 p.m.—School hall parents meeting.

**FIRST UNITED METHODIST CHURCH**  
The Rev. Robert Worgess, Pastor  
Sunday, Sept. 15—  
9:00 a.m.—Church school, 3rd grade through adult.  
10:00 a.m.—Church school, 2-year-olds through fifth grade.  
10:30 a.m.—Morning worship.  
"Putting Religion to Work" Baptismal service.  
7:00 p.m.—Senior MYF in church basement.  
Tuesday, Sept. 17—  
7:30 p.m.—Wesleyan Service Guild meeting at church.  
8:00 p.m.—Grace Otto circle.  
Wednesday, Sept. 18—  
9:00 a.m.—Marion Kline circle.  
1:00 p.m.—Vivian Otto circle.  
7:00 p.m.—Youth, 9-12 grades.  
8:00 p.m.—Senior Choir.

**ST. PAUL UNITED CHURCH OF CHRIST**  
The Rev. Warner Stebert, Pastor  
Sunday, Sept. 15—  
9:00 a.m.—Church service.  
10:10 a.m.—Church school.

**FIRST UNITED PRESBYTERIAN CHURCH**  
Unadilla  
The Rev. T. H. Liang  
Sunday, Sept. 15—  
9:15 a.m.—Sunday school.  
11:00 a.m.—Worship service.  
Every Tuesday—  
8:00 p.m.—Choir practice.

**CONGREGATIONAL CHURCH**  
(United Church of Christ)  
The Rev. Daniel Kelm, Pastor  
Sunday, Sept. 15—  
10:00 a.m.—Service, Sunday school.

**CHELSEA BAPTIST CHURCH**  
The Rev. Elmer S. Steenson, Pastor  
Sunday, Sept. 15—  
10:00 a.m.—Sunday school.  
11:00 a.m.—Worship service.  
Nursery care available during Sunday school and worship service.  
6:00 p.m.—Junior and Senior Baptist Youth Fellowship.  
7:00 p.m.—Evening worship.  
Wednesday, Sept. 18—  
7:30 p.m.—Bible study and prayer meeting.

**NORTH LAKE METHODIST CHURCH**  
The Rev. George Nevin, Pastor  
Sunday, Sept. 15—  
9:30 a.m.—Worship service.  
10:30 a.m.—Sunday school.

**METHODIST HOME CHAPEL**  
The Rev. John Fall, Administrator  
The Rev. Wm. Johnson, Chaplain  
Sunday, Sept. 15—  
8:45 a.m.—Worship service.

**IMMANUEL BIBLE CHURCH**  
The Rev. Frank C. Frinkle, Pastor  
145 E. Summit St.  
Sunday, Sept. 15—  
9:45 a.m.—Sunday school, nursery provided.  
11:00 a.m.—Morning worship, nursery provided.  
7:00 p.m.—Evening service.  
Every Wednesday—  
7:30 p.m.—Family Hour and Junior choir.

**ST. JACOB EVANGELICAL LUTHERAN CHURCH**  
12501 Reithmiller Rd., Grass Lake  
The Rev. Andrew Bloom, Pastor  
Sunday, Sept. 15—  
9:45 a.m.—Worship service.  
9:45 a.m.—Sunday school.  
10:45 a.m.—Worship service.

**ST. BARNABAS EPISCOPAL CHURCH**  
20500 Old US-12  
The Rev. William D. Ladkau, Vicar  
Sunday, Sept. 15—  
11:00 a.m.—Morning Prayer.  
Holy Communion. Nursery care provided.

**GREGORY BAPTIST CHURCH**  
The Rev. Grant Lapham, Pastor  
Sunday, Sept. 15—  
10:00 a.m.—Worship service.  
11:15 a.m.—Church school.  
6:30 p.m.—Baptist Youth Fellowship.  
7:30 p.m.—Evening worship service.

**ZION LUTHERAN CHURCH**  
Corner of Fletcher, Waters Rds. (Rogers Corners)  
The Rev. John R. Morris, Pastor  
Sunday, Sept. 15—  
Youth instruction begins.  
Sunday, Sept. 16—  
9:00 a.m.—Sunday school.  
10:15 a.m.—Worship.  
7:00 p.m.—New Huron River conference.

**Monday, Sept. 16—**  
7:15 p.m.—Junior choir.  
8:00 p.m.—Senior choir.

**Tuesday and Wednesday, Sept. 17 and 18—**  
ACLU Conference Retreat at Tecumseh Woods.

**Wednesday, Sept. 18—**  
8:00 p.m.—Sunday school staff.  
**BETHEL EVANGELICAL AND REFORMED CHURCH**  
(United Church of Christ)  
Freedom Township  
The Rev. T. W. Menzel, Pastor  
Sunday, Sept. 15—  
10:00 a.m.—Worship and Sunday school.  
11:00 a.m.—Sunday school.

**NORTH SHARON COMMUNITY BIBLE CHURCH**  
Sylvan and Washburn Rds.  
The Rev. Paul Collins  
Sunday, Sept. 15—  
10:00 a.m.—Sunday school.  
11:00 a.m.—Worship service.  
6:30 p.m.—Young People's service.  
7:00 p.m.—Evening service.  
Every Wednesday—  
7:30 p.m.—Prayer meeting.

**ST. THOMAS EVANGELICAL LUTHERAN**  
Cor. Ellsworth and Haab Rds.  
Freedom Township  
The Rev. Daniel L. Mattson, Pastor  
Thursday, Sept. 12—  
1:00 p.m.—Church cleaning.  
8:00 p.m.—Confirmation class.  
Saturday, Sept. 14—  
9:00 a.m.—Confirmation class for 6th and 7th graders.  
Sunday, Sept. 15—  
10:00 a.m.—Church service.  
11:00 a.m.—Sunday school.

**CHURCH OF CHRIST**  
13661 Old US-12, East  
R. D. Parnell, Minister  
Sunday, Sept. 15—  
10:00 a.m.—Bible study.  
11:00 a.m.—Worship service.  
7:00 p.m.—Evening service.  
Bible study each Wednesday at 7:30 p.m.



### Jaycees Compete in Softball Tournament

The District 26 Jaycees Softball Tournament Sunday saw Chelsea defeated, 6-4, by Ypsilanti. Chelsea had the bases loaded in the last inning with two outs when Si Hopkins lashed a line drive to the outfield. It fell victim to the center fielder's diving catch, robbing Si of a base hit and Chelsea of victory.

Teams participating in the Ann Arbor Jaycees hosted tournament were Dexter, Saline, Milan, FCI, Ypsilanti, Ann Arbor I, Ann Arbor II and Chelsea.

In the first games, Saline defeated Dexter, 11-2, FCI squeaked by Ann Arbor I by 9-8, in extra innings and Ypsilanti pounded Ann Arbor II, 20-8. In the quarter-finals, Saline lost a close game to FCI by 6-5. Chelsea, which drew a bye in the first round met Ypsi, and lost. In the finals, Ypsi won a defensive battle, 3-2, against FCI.

Members of the Chelsea, slugging team include Tom Dunlap, Walt Brown, Tony Bowen, Neil Fahrner, Ed Greenleaf, Charlie Koenig, Jim Kneibbaum, Chuck Matloff, Ken Norris, Don Proctor, Art Steinaway, Glen Weir, Tony Wisniewski, Tom Thainer, and coachmen Si Hopkins and Joe Verway.

**SKILLS WORKSHOP SPEAKER** Mrs. Dwight Stevenson demonstrates how to expand the storytelling experience through visual aids. As a nationally recognized specialist she will be leading one of the Saturday workshops at the Skills Workshop sponsored by the Ann Arbor Washtenaw Council of Churches.

### Church School Workers Meet Saturday in Skills Workshop

Community leaders from several churches will come to Ann Arbor, Sept. 14 to conduct a Skills Workshop for more than 200 church school officers, teachers and youth workers from Washtenaw county. The event will be sponsored by the Ann Arbor Washtenaw Council of Churches. It will be held in Zion Lutheran church, 1501 W. Liberty, Ann Arbor from 9 a.m. to 4 p.m.

The program will consist of seven Skills Workshops designed to help local church leaders in their own responsibilities.

Guest headliner will be Dr. Gerald Knoff of New York, associate General Secretary for Christian Education for the National Council of Churches. Dr. Knoff is nationally known in his field. He received his PhD from Yale University, received honorary degrees from universities both in the U.S.A. and abroad, and has received numerous awards and citations.

He will address the luncheon audience on "Christ in Christian Education," and will deliver the climactic message as well.

The Rev. Gabe Campbell and his wife "Sandy" will come from Greenwich, Conn., where the Rev.

**FIRST CHURCH OF CHRIST, SCIENTIST**  
1888 Washtenaw Ave., Ann Arbor  
Sunday, Sept. 15—  
9:30 a.m.—Sunday school.  
10:30 a.m.—Morning service.  
Lesson-Sermon is entitled "Substance."

**SALEM GROVE METHODIST CHURCH**  
The Rev. George Nevin, Pastor  
Sunday, Sept. 15—  
10:00 a.m.—Sunday school.  
11:15 a.m.—Church service.

**FIRST ASSEMBLY OF GOD CHURCH**  
14900 Old US-12  
The Rev. Stephen J. Vaudrey, Pastor  
Sunday, Sept. 15—  
10:00 a.m.—Sunday school.  
11:00 a.m.—Worship service.  
7:00 p.m.—Evangelistic service.

**ST. JOHN'S EVANGELICAL AND REFORMED CHURCH**  
(United Church of Christ)  
Rogers Corners  
The Rev. Robert Townley  
Sunday, Sept. 15—  
9:30 a.m.—Church service.  
10:30 a.m.—Sunday school.

**WATERLOO VILLAGE CHURCH**  
(Evangelical United Brethren)  
The Rev. Wilbur Silvernail, Pastor  
Sunday, Sept. 15—  
10:00 a.m.—Sunday school.  
11:15 a.m.—Worship service.

**ST. JOHN'S EVANGELICAL AND REFORMED CHURCH**  
(United Church of Christ)  
Francisco  
The Rev. Robert Townley  
Sunday, Sept. 15—  
9:45 a.m.—Sunday school.  
11:00 a.m.—Church services.

### LIFELINES:

#### OL' MAN KLINE

A certain Mr. Kline, discouraged, defeated, and convinced that life just wasn't worth living because no one cared for him, walked past a church one Sunday evening when services were in progress. As the congregation sang he caught the strains of that familiar hymn: "Saved by grace alone, this is all my plan. Jesus died for all mankind, and Jesus died for me." His hearing, however, was not very good, so when the congregation came to the words, "Jesus died for all mankind," he thought they sang, "Jesus died for ol' man Kline." "Why," he said, "that's me!" Stopping in his tracks, he turned and entered the small auditorium. There he heard the simple message of the Gospel as the minister presented the good news that Jesus Christ came into the world to save sinners. Mr. Kline believed and was saved.

Friend, Jesus also died for you, and your name doesn't have to be KLINE to realize this. "For God so loved the WORLD, that he gave his only begotten Son, that WHOEVER believeth in him should not perish, but have everlasting life" (John 3:16). He GAVE but you must RECEIVE! For "as many as received him, to them gave he power to become the sons of God, even to them that believe on his name" (John 1:12).

For whosoever shall call upon the name of the Lord shall be saved. Roman 10:13.

#### Immanuel Bible Church

A Bible-Believing Church with a Christ-Exalting Ministry.  
Rev. Frank C. Frinkle, Pastor. Phone 475-8936.

### Letters to the Editor

Dear Editor:  
Our club wishes to thank you for the many write-ups you have given us in both the Chelsea and Dexter paper. Especially for the notices of our club in your community calendar.

We receive many inquiries pertaining to our club. This is indeed a service to new Chelsea residents. At a area meeting in Jackson, we discovered how lucky our club was to be given a space in community events. Some areas have no way of letting residents know there is a TOPS Club available to them.

I believe the letters of appreciation we receive from our Servicemen can say more for helping us get their addresses than we can.

One man wrote, "I thank not only for the package but for the thought."

Another wrote, "I received package today when I was from patrol and was very pleased by the fact that are people home thinking men over here in Vietnam."

Still another writes, "We to get something from the war. And another writes, 'I thank you for sending me packages. It lets us know the back in the States still care. We are over here.'"

So for our Servicemen and TOPS Club, thanks for assistance. Sincerely,  
TOPS CLUB  
Karen Koch, leader.

Telephone Your Club News To GR 6-3581.

### WATERLOO BEAUTY SHOP

Operated By Rosemary Klink.

Open Tues. thru Sat., 8 a.m. to 6 p.m.

CALL FOR APPOINTMENT  
475-8895

## New Arrival!

Peter Pan bras and girdles  
now in stock

Also new line of  
LORRAINE LINGERIE

Come in and see for yourself  
how nice these new lines are.

Patty Ann Shoppe

**Pamper your home with a Palace Quality housecleaning**  
PHONE JIM COLBY  
Daytime:  
Ann Arbor 761-2699  
Evenings:  
Ann Arbor 761-2699

**Palace Quality**  
LAUNDERERS/DRY CLEANERS

# FREE STACKING MUGS

(Save cabinet space)

With a \$3.00 purchase of Ashland Gasoline

These Avocado Green mugs are heat-resistant, Fire-King-ware and designed to fit on top of each other for convenient stacking—save cabinet space. And you'll like their clean good looks on the table, too. Use the mugs for coffee, tea, hot chocolate or milk.

Start stacking up a complete set. With every \$3.00 purchase of Ashland Gasoline you get one modern stacking mug FREE. Just drive in to any Ashland Oil service station displaying the "FREE MUG" sign.



ASHLAND OIL & REFINING COMPANY





Mrs. Gene Paul Herbert

### Evelyn Ann Arnett, Gene Herbert Wed Saturday at St. Paul Church

Evelyn B. Rothfuss, daughter of Mr. and Mrs. Walter H. Rothfuss, became the bride of Pfc. John W. McGuire Saturday night.

The bridegroom is the son of Mrs. Lewis J. McGuire and the late Mr. McGuire of 20 Payour Rd., Ann Arbor.

The Rev. Warner H. Siebert administered the vows before approximately 200 guests in St. Paul United Church of Christ. Bruce Galbraith of Chelsea sang "O Perfect Love" and "The Lord's Prayer."

The bride wore a white floor-length gown of silk organza and a long lace train. She carried a bouquet of white roses and a corsage of white roses.

Miss Helen Rothfuss, sister of the bride, was maid of honor. She wore a white gown of nylon organza over tulle. The dress featured a scoop neckline, elbow-length sleeves and an empire waistline. Her four-tiered white veil was held by a small bow. She carried a colonial bouquet of yellow carnations.

Miss Karen Buss and Miss Kay Buss, and Miss DeAnna Kay of Ann Arbor were bridesmaids. They wore white gowns in a similar style to the maid of honor and carried colonial bouquets of white carnations.

The bride's mother chose an aqua crepe dress with aqua and white accessories. She wore a corsage of white roses.

The bridegroom's mother chose a three-piece pink suit with pink and white accessories. She also wore a corsage of white roses.

Flower girl was Beth Heller. She wore a white dress similar to the one worn by the maid of honor. She carried a basket of yellow carnations.

Best man was Paul Rothfuss, brother of the bride. He was assisted by Neil Rothfuss, brother of the bride, Dennis Ticknor and Orville Finkbeiner.

A reception in the church parlor followed the ceremony. Mrs. Waldo Horning and Mrs. Edwin Horning, aunts of the bride, cut the cake. Mrs. Fred Schallhorn, aunt of the bridegroom, served the groom's cake. Mrs. Ernest Horning, aunt of the bride, poured coffee and Mrs. Volma McGuire, aunt of the bridegroom, served punch.

Mrs. Joseph Steele handled the guest book and Mrs. Gary Koch and Miss Linda Keizer were at the gift table.

The couple are honeymooning in northern Michigan for a week. The bridegroom will return to Ft. Dix, N. J., where he is stationed. The bride will meet him there at a later date.

The bride graduated from Chelsea High School and is employed by the S. S. Kresge Co. The bridegroom attended Saline High School and was employed by A. & J. Bakery & Electric Co. before enlisting in the U.S. Army in March.



**Winans Jewelry Store**

REGISTERED **Keepsake** DIAMOND RINGS

Your Keepsake Diamond Ring will reflect more brilliance and beauty in the center diamond... a perfect gem of fine color and exact cut.



**Winans Jewelry Store**

### Evelyn Rothfuss, Pfc. J. McGuire Wed Saturday at St. Paul Church

Evelyn B. Rothfuss, daughter of Mr. and Mrs. Walter H. Rothfuss, became the bride of Pfc. John W. McGuire Saturday night.

The bridegroom is the son of Mrs. Lewis J. McGuire and the late Mr. McGuire of 20 Payour Rd., Ann Arbor.

The Rev. Warner H. Siebert administered the vows before approximately 200 guests in St. Paul United Church of Christ. Bruce Galbraith of Chelsea sang "O Perfect Love" and "The Lord's Prayer."

The bride wore a white floor-length gown of silk organza and a long lace train. She carried a bouquet of white roses and a corsage of white roses.

Miss Helen Rothfuss, sister of the bride, was maid of honor. She wore a white gown of nylon organza over tulle. The dress featured a scoop neckline, elbow-length sleeves and an empire waistline. Her four-tiered white veil was held by a small bow. She carried a colonial bouquet of yellow carnations.

Miss Karen Buss and Miss Kay Buss, and Miss DeAnna Kay of Ann Arbor were bridesmaids. They wore white gowns in a similar style to the maid of honor and carried colonial bouquets of white carnations.

The bride's mother chose an aqua crepe dress with aqua and white accessories. She wore a corsage of white roses.

The bridegroom's mother chose a three-piece pink suit with pink and white accessories. She also wore a corsage of white roses.

Flower girl was Beth Heller. She wore a white dress similar to the one worn by the maid of honor. She carried a basket of yellow carnations.

Best man was Paul Rothfuss, brother of the bride. He was assisted by Neil Rothfuss, brother of the bride, Dennis Ticknor and Orville Finkbeiner.

A reception in the church parlor followed the ceremony. Mrs. Waldo Horning and Mrs. Edwin Horning, aunts of the bride, cut the cake. Mrs. Fred Schallhorn, aunt of the bridegroom, served the groom's cake. Mrs. Ernest Horning, aunt of the bride, poured coffee and Mrs. Volma McGuire, aunt of the bridegroom, served punch.

Mrs. Joseph Steele handled the guest book and Mrs. Gary Koch and Miss Linda Keizer were at the gift table.

The couple are honeymooning in northern Michigan for a week. The bridegroom will return to Ft. Dix, N. J., where he is stationed. The bride will meet him there at a later date.

The bride graduated from Chelsea High School and is employed by the S. S. Kresge Co. The bridegroom attended Saline High School and was employed by A. & J. Bakery & Electric Co. before enlisting in the U.S. Army in March.

### Club and Social Activities

#### CHILD STUDY CLUB

The first fall meeting of the Chelsea Child Study Club was held at the home of Mrs. George Stefan on Sept. 10. Mrs. Brian French and Mrs. D. H. Thomas were guests.

Reports were read from finance, treasurer, and program committees, followed by a general reading of the club's constitution.

Guest speaker of the evening was Marjorie Brazell, field director of the Huron Valley Girl Scout Council. She informed the club of the various aspects of scouting from Brownies on up to Senior Scouts.

Refreshments were served by Mrs. Charles Cattell and Mrs. Jerald Beaumont.

#### VFW AUXILIARY

Geraldine Klink described the National Convention of the Veterans of Foreign Wars Ladies Auxiliary to the 10 members present at the regular meeting Monday. Donna Lee Blough also attended the Sept. 21-22 convention.

Two dollars was voted out towards the Christmas party for indigent patients at Battle Creek Veterans Hospital. Lucy Platt reported on Auxiliary-volunteered hours at the community fair. The Auxiliary plans to present a flag to the new junior high school Sunday.

The sixth district rally will be at Springfield Sept. 29. The annual fall pow-wow is to be held at Mackinac Island, Sept. 20 to 22.

#### KINDER CLUB

The Kinder Club of Chelsea held their first meeting at the home of Mrs. Ron Eder. After business meeting, the thirteen members present looked at childhood photographs. Mrs. Edson Whitaker was co-hostess. The next meeting will be a husband's night Sept. 28 when the group will go bowling and adjourn to the home of Mrs. Don Proctor.

#### WOMAN'S CLUB

The Woman's Club of Chelsea met for their annual fall picnic Tuesday at the home of Mrs. Byron Soule. Hostesses for the picnic were Mrs. Harold Spaulding and Mrs. Thomas McClear.

The annual Women's Club rummage sale has been set for Oct. 11 and 12 and is to be held at Sylvan Town Hall.

The next meeting will be Sept. 24. Probate Judge Ross W. Campbell will speak on the history of Washtenaw county. The meeting will be at the library and all are welcome.

#### MODERN MOTHERS

Modern Mothers Child Study club met for the first time this season for a pot-luck dinner at the home of Mrs. Walter Brown. The 15 members present had an informal business meeting and heard a short lecture on girl scouting by Mrs. Troy Brasso and Mrs. Paul Mann.

The next meeting will be Sept. 24 at 8 p.m. at the home of Mrs. Clarence Wood with Mrs. Darold Fischer as co-hostess. The speaker for that evening will be from Spaulding for Children.

The average American family spends 10 percent of its total disposable income on clothing.

skirt was formed by tiers of lace with an overlay of silk organza. The chapel train was edged with a lace border.

A crown of aurora crystals secured the bride's elbow length bouffant veil of nylon illusion. She carried a colonial bouquet of white roses and stephanotis.

Miss Helen Rothfuss, sister of the bride, was maid of honor. She wore a white gown of nylon organza over tulle. The dress featured a scoop neckline, elbow-length sleeves and an empire waistline. Her four-tiered white veil was held by a small bow. She carried a colonial bouquet of yellow carnations.

Miss Karen Buss and Miss Kay Buss, and Miss DeAnna Kay of Ann Arbor were bridesmaids. They wore white gowns in a similar style to the maid of honor and carried colonial bouquets of white carnations.

The bride's mother chose an aqua crepe dress with aqua and white accessories. She wore a corsage of white roses.

The bridegroom's mother chose a three-piece pink suit with pink and white accessories. She also wore a corsage of white roses.

Flower girl was Beth Heller. She wore a white dress similar to the one worn by the maid of honor. She carried a basket of yellow carnations.


Best man was Paul Rothfuss, brother of the bride. He was assisted by Neil Rothfuss, brother of the bride, Dennis Ticknor and Orville Finkbeiner.

A reception in the church parlor followed the ceremony. Mrs. Waldo Horning and Mrs. Edwin Horning, aunts of the bride, cut the cake. Mrs. Fred Schallhorn, aunt of the bridegroom, served the groom's cake. Mrs. Ernest Horning, aunt of the bride, poured coffee and Mrs. Volma McGuire, aunt of the bridegroom, served punch.

Mrs. Joseph Steele handled the guest book and Mrs. Gary Koch and Miss Linda Keizer were at the gift table.

The couple are honeymooning in northern Michigan for a week. The bridegroom will return to Ft. Dix, N. J., where he is stationed. The bride will meet him there at a later date.

The bride graduated from Chelsea High School and is employed by the S. S. Kresge Co. The bridegroom attended Saline High School and was employed by A. & J. Bakery & Electric Co. before enlisting in the U.S. Army in March.




**TIPS for your TOP**

### from TODDY and FRAN

Have you thought seriously of getting a nice sharp easy-to-take-care-of fall hair styling—one that will go to the beach or stand still for a sight-seeing vacation even when the top's down on the convertible? And then have you thought of a wig to "go formal" with when you don't want to look quite like casual? Stop in chances are help you think... an answer with a solution to your fall grooming dilemma. We're open evenings for your convenience except Saturday. Park with ease, and free immediately adjacent to the shop.

**Magic Mirror Beauty Salon**  
Phone 665-0816  
5585 Jackson Rd., Ann Arbor



**MILK**

For quick refueling, serve milk at snack-time

There'll be plenty of refueling, and re-filling, too, when milk makes its appearance on the snack table. The kids just love it!

Milk is Everyone's Favorite Health Drink!

**WEINBERG DAIRY**  
QUALITY PASTEURIZED DAIRY PRODUCTS  
Old US-12 Phone GR 5-5771



Mrs. John W. McGuire

### FOUR MILE LAKE

Mrs. William Werich and daughter, Fay Ann, were Sunday visitors of her son, Rudolph, Werich and family, of Clinton.

Mrs. Dorothy Heinger was a Sunday visitor of her daughter, Mrs. Alvin Moore and family, of Heim Rd.

Mrs. Ernest Girbach of Saline was a Monday visitor of her parents, Mr. and Mrs. Gene Lindeman for a birthday gathering for Mr. Lindeman with cake and lunch. The occasion was Mr. Lindeman's 82nd birthday.

Mrs. Leonard Loveland of Loveland Rd. visited her sister, Mrs. Ezra Heinger last week.

### Chelsea Is First Community in County Finishing Ditty Bags

According to Nina Blakely, Chairman of the Ditty Bag Committee of the Washtenaw County Chapter of the American Red Cross, Chelsea was the first community in the county to turn in its quota of 100 completed ditty bags.

Under the chairmanship of Gertrude Young, these bags were made from material supplied by the Red Cross. Ladies in the area also were the only ones to turn in the bags all filled and ready to ship. Each bag contains a Christmas greeting card made by the children in Summer Arts and Crafts programs. Additional small gift items were included as they were contributed by individuals and groups. Others helped with purchasing supplies and packing the bags.

The ditty bags will be shipped by Red Cross Chapters across the country to each serviceman and woman stationed in Vietnam so as to arrive at Christmas.

### BUSY DETROIT RIVER

The Detroit River carries more tonnage annually than the Rhine, Seine, Thames and Volga Rivers combined. More tonnage passes through the Soo Locks in an eight months Great Lakes navigation season than through the Panama or Suez Canal in a normal year.

Speeches are made for two purposes—to tell the truth or to hide the truth.



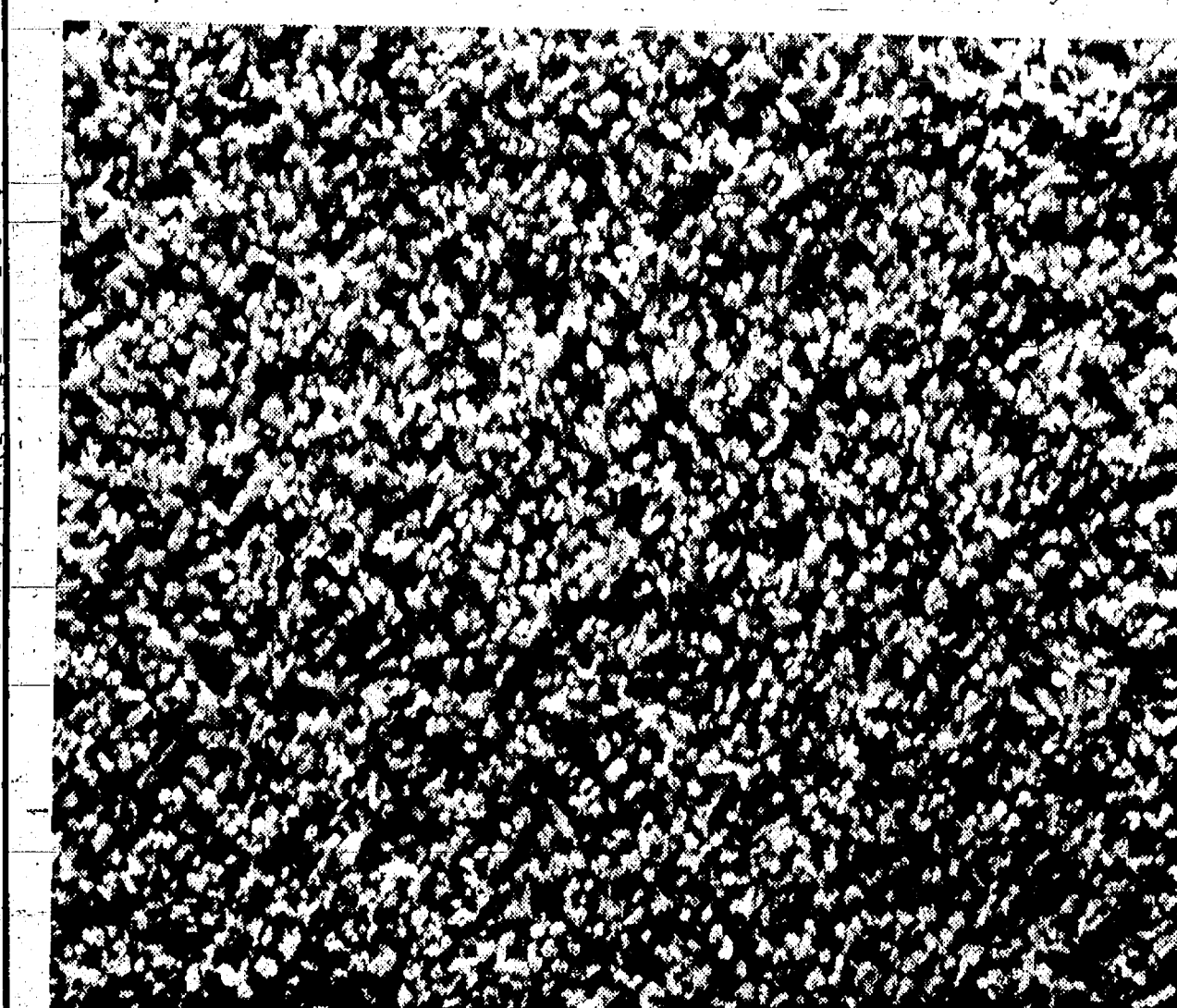
**BETROTHED:** The engagement of Karen Irene Buss to William Harold Polley has been announced by her parents, Mr. and Mrs. Henry W. Buss of 119 Clardale Ct. Miss Buss is a graduate of Chelsea High School and Cleary College. She is employed by the University of Michigan Mental Health Research Institute. Her fiancé, son of Mr. and Mrs. George H. Polley of Marton Rd., Ann Arbor, is a graduate of Saline High School and served an electrical apprenticeship under the AIAAC. He is employed by the Standish Electric Engineering Co.

**YOUTHFUL WRITER**  
Thomas Jefferson was only 33 years old when he drafted the Declaration of Independence.

**CHARM BEAUTY SALON**  
4396 CLEAR LAKE ROAD  
(Formerly of Grass Lake)

Two Operators - Hair Styling and Wig Service

**PHONE 479-4147**

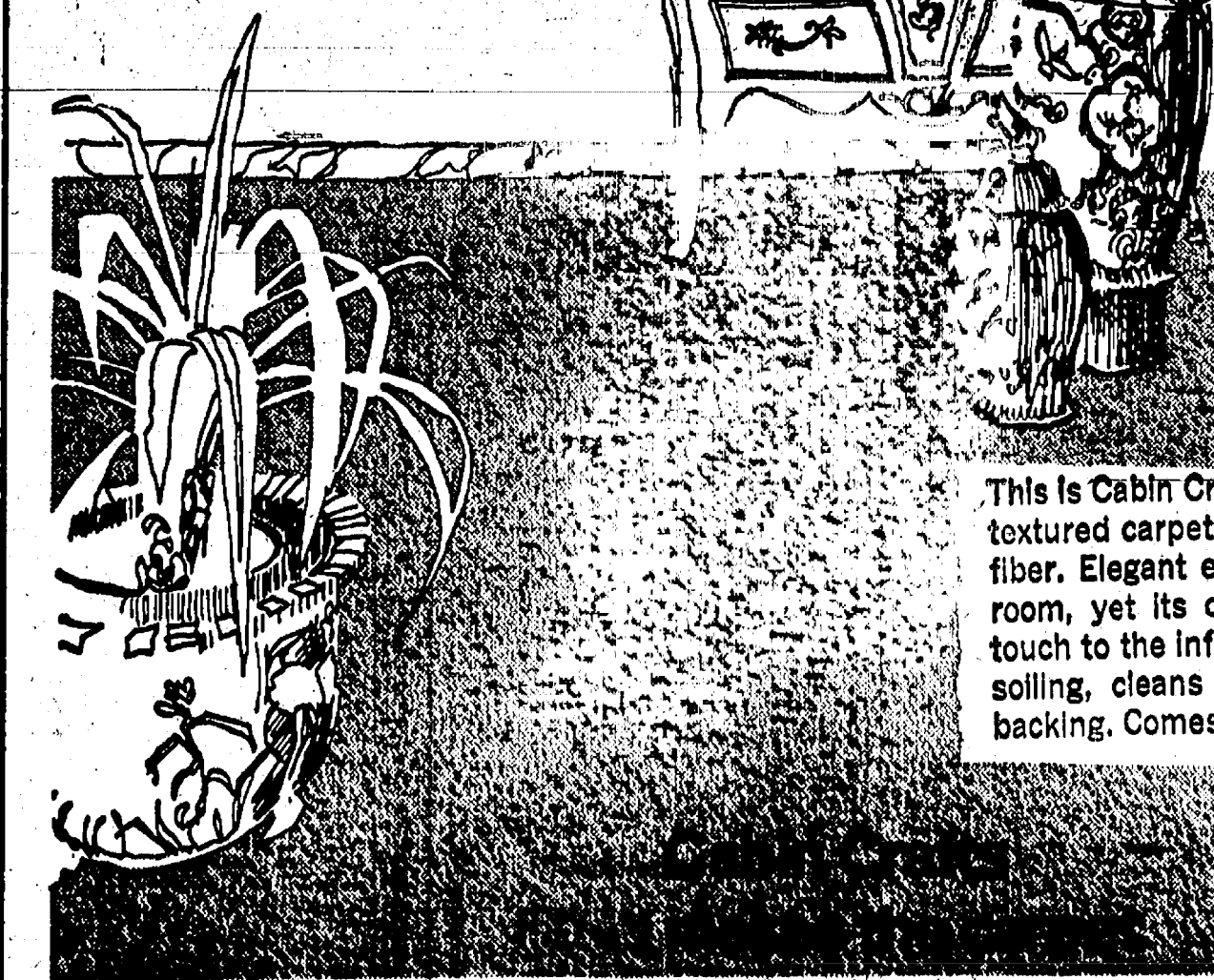


### CABIN CRAFTS Fall Sale Sept. 12 - Oct. 19

**DESIREE**  
Regular \$8.95  
**\$6.95** Sq. Yd.

**DESIREE.** A carpet that goes anywhere, with unusual flair. A shaggy plush that says something different, beautifully, because it offers unbeatable combinations. Texture that's both shaggy soft and ruggedly spot-resistant. Colors that are actually two—18 two-shade colorations that offer impressive adaptability to casually contemporary or traditionally formal rooms. And Cabin Crafts made Desiree entirely of 100% Celanese Fortrel® for long wear, easy care.

### CABIN CRAFTS Fall Sale Sept. 12 - Oct. 19 **LANGLEY**



This is Cabin Crafts' Langley... a smooth, velvet-textured carpet made of long life Acrilan® acrylic fiber. Elegant enough for even the most formal room, yet its quality styling lends a decorator touch to the informal. Easy to care for... resists soiling, cleans easily, won't fade. Double jute backing. Comes in 27 striking colors.

Regular \$9.95  
**\$7.95** Sq. Yd.

As seen in House Beautiful, House & Garden, Better Homes & Gardens and McCall's.

that makes the home.

**MERKEL BROTHERS**  
Open Monday & Friday Until 9  
Phone Chelsea 475-8621





**ATTEND SALES MEETING:** Mr. and Mrs. Tom Bust, 116 E. Summit, owners of Chelsea Hardware were greeted by a Simplicity Manufacturing Co. official while attending a gigantic sales meeting and product introduction show held recently at the Simplicity plant, Port Washington, Wis. The meeting, attended by more than 800 Simplicity equipment dealers and their wives from throughout the country, launched the company's new marketing and sales programs and unveiled a complete new line of riding and walk-behind power products for lawn mowing and snow removal applications. The Simplicity meeting is reported to be the largest dealer product show held annually in the Milwaukee area.

When shopping for clothing you should select colors that you enjoy wearing, that are becoming to you, that combine well with other colors and that will stay in fashion.

### Chelsea School District Cafeteria Menu

Monday, Sept. 16—Varsity burgers, buns, cheese, buttered beans, coffee cake and butter, pink apple sauce and milk.

Tuesday, Sept. 17—Goulash with cheese, buttered corn, cornbread, butter, fruit and milk.

Wednesday, Sept. 18—Ham on bun, potato chips, salad, pineapple and milk.

Thursday, Sept. 19—Beef stew, market day salad, rolls and butter, apple crisp and milk.

Friday, Sept. 20—Tuna casserole, mixed vegetables, bread and butter, fruit Jell-O and milk.

### WHITE ALUMINUM GUTTERS

Seamless, jointless, machine made. Any length.

Call 428-8468.

**Wilson Metal Shop**  
Manchester, Mich.

Watch this corner for the next 6 weeks and see the star-studded line-up of Chelsea High School athletes.



### Jantzen's Are Going Places!

"LIKE BACK TO SCHOOL"

**CRAIG HOULE** (right) finds our Popcorn-stitched "Outsider" is just the vehicle for attracting the right crowd.

**KEITH KUSTERER** (left) wearing the Jumbo Cable Turtleneck in ivory.

**DAVE CONKLIN** (center) in the Andy Williams Startime double-breasted model.

Jantzen spoken here



See Them All at  
**Strieter's Men's Wear**  
"The Place To Go for Brands You Know"

### Service Men's Corner

#### Thomas J. Tuttle Assigned to Long Range Reconnaissance Patrol

Spec. 5 Thomas J. Tuttle, son of Leo and the late Mrs. Tuttle, has a new assignment and new address. He is one of a five-man team of Long Range Reconnaissance Patrol and will be going out for five days at a time to locate and report on Viet Cong. The team has top priority on call for land and air fire.

Tuttle has served for the last six months in Ben Me Thau in the Central Highlands of Vietnam as a Fire Director Controller. His new address is:

Spec. 5 Thomas J. Tuttle,  
RA 16849567  
L.L.R.P.-HQ Co. 2nd Brigade  
4th Inf. Div.  
APO SF 96262

#### Stephen F. Harris Enlists in Navy

Stephen F. Harris, who recently enlisted in the Navy, left for basic training Aug. 29.

He is the son of Mr. and Mrs. Fred Harris of 415 S. Main St., where a family dinner was given in his honor Sunday, Aug. 25. Approximately 30 guests were present for the pot-luck dinner on the lawn.

Harris graduated from Chelsea High school in 1967 and has been employed at Chelsea Grinding Co. for the past year.

His address is:  
Stephen F. Harris  
B 549140 SR RTC  
Company 514, 21st Bttn.  
2nd Reg.  
Great Lakes, Ill. 60088

#### E-1 James P. Swanson Training at Ft. Knox

Army private E-1 James P. Swanson has been assigned to Company C, 12th Battalion, 3rd Brigade at the U.S. Army Training Center, Armor, at Ft. Knox, Ky.

Swanson, 23, is the son of Mr. and Mrs. Ralph Swanson, 320 Island Lake Rd. After graduating from Chelsea High school, he worked with sheet metal at Carlson Bros. before leaving for Ft. Knox Aug. 27.

He will spend the next two months learning the fundamental skills of the soldier, firing live ammunition under simulated combat situations, learning protective measures and first aid for chemical, biological and radiological attacks, and being schooled in the use of modern arms.

Following the completion of basic training, Pvt. Swanson will receive at least an additional eight weeks of either advanced instruction or on-the-job training to qualify him in a specialized military skill.

#### James E. Knott Completes Summer ROTC Camp Session

Ft. Riley, Kan.—James E. Knott, son of Mrs. Doris M. Knott, 1207 Kernwood Dr., Chelsea, Mich., a student at Eastern Michigan University, Ypsilanti, has completed Army Reserve Officers' Training Corps summer camp. The course ended Aug. 9 at Ft. Riley, Kan.

During the encampment, he received six weeks of training in leadership, rifle marksmanship, physical conditioning and other military subjects.

Upon successful completion of summer camp and graduation from college, he is eligible to be commissioned as a second lieutenant in the U. S. Army.

Cadet Knott is a member of Alpha Phi Omega fraternity, and a 1965 graduate of Chelsea High school.

Stolen Credit Cards can be costly. Protect yourself with

### Auto-Owners Credit Card Insurance

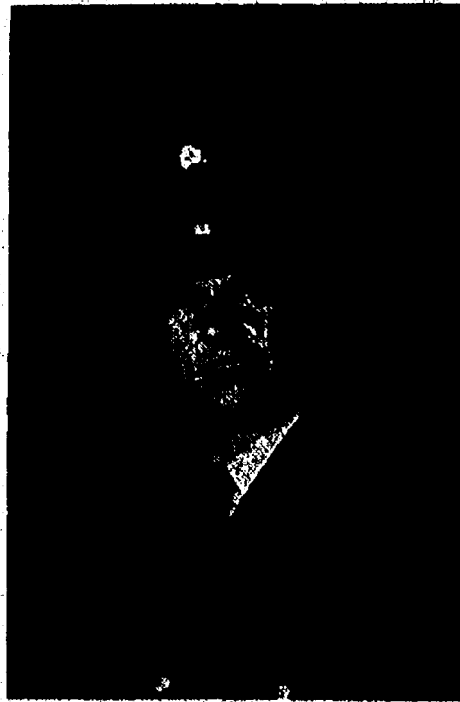


See your A-O Man

**A. D. MAYER AGENCY, INC.**  
115 Park St., Chelsea  
PHONE 479-5061

"Your Protection Is Our Business"

**Auto-Owners INSURANCE**  
Life - Casualty - Fire - Auto



SPEC. 5 THOMAS J. TUTTLE

### ISLAND ON WHEELS

Guam may be just a tiny island in the Pacific, but it's big enough to hold more than 20,000 automobiles. Guam had 20,268 cars registered on January 1, 1968—more cars, in fact, than 37 countries in the free world.

Use your food freezer efficiently. Research shows that fruits and vegetables lose quality with long storage, so use the oldest packages of food first.

### Five Proposals Going on Ballot To Amend State Constitution

Five proposed state questions will be put before Michigan voters at the general election Tuesday, Nov. 5.

First on the state proposal ballot is the question of removing the present restriction against the adoption of a graduated income tax. The question will read "Shall Section 7 of Article IX of the State Constitution be amended to read as follows: 'An income tax at flat rates or graduated as to rate or base may be imposed by the state or any of its subdivisions'?"

If accepted, this change would give state and local governments the option to have income tax rates as well as amount, vary according to level of income.

The second proposal will be the question of observing daylight savings time. As it stands now, Public Act 6 provides that Michigan be exempt from observing daylight savings time. The referendum will either approve or reject that act.

Whether the state shall bond itself for \$335,000,000 for the prevention and correction of water pollution will be the issue in proposal number three. If accepted,

the state of Michigan would be able to issue general obligation bonds of the state to plan, acquire, and construct facilities for the prevention and halting of water pollution. The state could use part of the money as loans, grants and advances to state divisions for the same purposes. The general fund of the state would be the method of repaying the bonds.

The fourth proposal would, if accepted, enable the state to bond itself for \$100,000,000 for public recreational facilities and programs of land purchasing and development of parks, forest and wildlife areas, fisheries and other public recreational facilities. The proposal would be paid for in the same way as proposal three and would make the same loans, advances, and grants to political subdivisions and agencies of the state for such purposes.

The final proposal would, if accepted, allow members of the legislature to be appointed or elected to another state office during their term of office.

People who are not used to hard work find a medium amount of work a terrific strain.

### Swimming Certificates Should Be Claimed

Children who have not yet picked up their swimming certificates and pins from the Recreation Association program this summer should do so Saturday afternoon at the home of Mrs. Pickwick, 159 Park.

Approximately 45 of the 85 participants received pins and certificates. The following should claim theirs Saturday.

Beginners certificates—Karen Tobin, Tim Knickerbocker, Denise Robbins, Diana Roy, Nancy Rossback.

Advanced beginners—Kirk Steinaway, Bob Ruggles, Tom Henderson, Terry Knickerbocker, Jan Frish, Beth Tobin, Mary Dettling, Karen Gallo, Nancy Hepburn, Tom Hepburn, Kim Miller, Debbie Rooke, Debbie Rothback.

Intermediates—Shelly Porath, Linda Anderson and Pam Boyer.

### SWATTER'S LORE

Baseball bats are made from the northern white ash. Its wood has the right hardness, resilience, and weight. Second-growth trees with a diameter of 12 to 15 inches make the best bats because their wood is more resilient than that from larger, older trees.

Subscribe Today to The Standard!

### Kiwanians Hear Heidi Sprague Tell Of Mexican Tour

Heidi Sprague, member of Musical Youth International, gave concerts throughout Mexico for a month this summer, spoke Monday's Kiwanis meeting. With the assistance of her mother she showed slides taken at the tour.

Guests at the meeting were vester Leonard, Washenaw co-treasurer; Bruce Galbraith, assistant principal and athletic director of Chelsea High school; and Liam Matis, visitor at the home of Mrs. Nielsen.

Key Club members present: Ron McKernan, Tom Dettling, Hardy, T. Smith, Lynn B. Rodney Houle and Jim Pearson. The club will entertain teachers in the Chelsea school on at the next ladies night Monday, Sept. 23.

Deaths from premature heart and circulatory diseases cost nation about \$1 billion a year wages, with another \$300 million lost from disabilities, it determined by a recent study according to the Michigan Association.

## MAYTAG



Beautiful new family-size Maytag Washers. Trim new Maytag Halo-of-Heat® Dryers bristling with new ways to get clothes clean. Maytag makes the washer... dryer YOU CAN DEPEND ON. Available in stunning new Spanish Avocado or Cordoba Copper... to add decorator excitement to your home decor.



Great New MAYTAG  
5\*2\*5  
WARRANTY\*

MODEL  
A-106  
DE-306

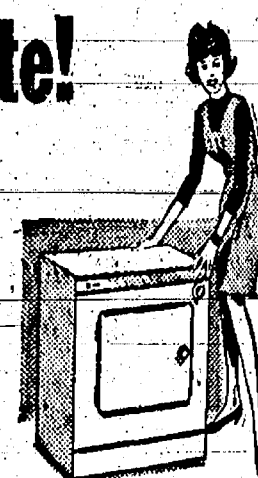
## New Maytag Washer & Dryer In Color or White!

BUY 'EM BOTH FOR ONLY

**\$379<sup>90</sup>**

### THE DRYER WITH A DIFFERENCE

- ★ Slim, Trim Maytag Halo-of-Heat® Dryers: Fast dry clothes in a circle of low temperature heat. Gentle to all fabrics.
- ★ 3 Temps: Choose from Regular Cables, Wash 'n Wear and Air Fluff
- ★ Dacron Lint Filter: Fresh Air System
- ★ Snag free Porcelain Drum
- ★ Perfect for Permanent Press



Just plug it in Turn it on... You're ready to dry...

\*No special installation! Just plug it in to any adequately wired 115 volt outlet, he dries 6-foot, heavy duty electrical cord-stores out of the way on the back of the dryer when not in use.

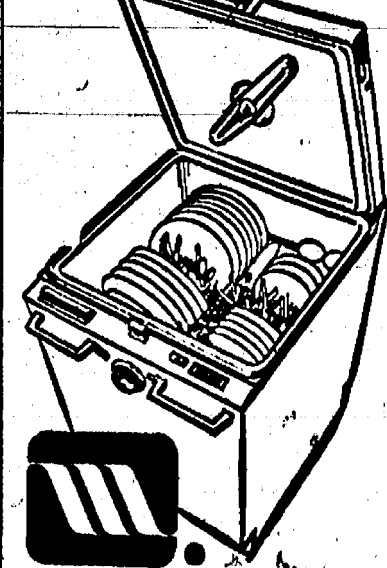
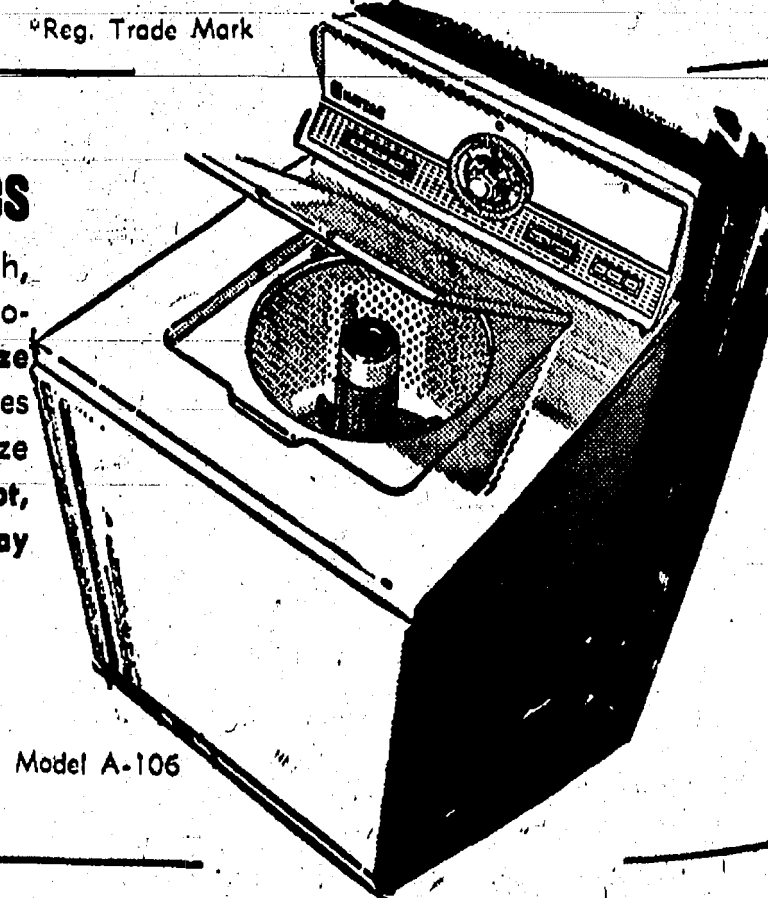
®Reg. Trade Mark

### DEPENDABLE MAYTAG AUTOMATICS

- ★ Lint Filter Agitator: Famous Maytag thorough, gentle action. Built-in Underwater Filter. Automatic Fabric Softener Dispenser.
- ★ Family-Size Tub ★ Automatic Water Level Control: Saves gallons of hot water. Adjusts water level to size of load
- ★ Pushbutton selectors give you Hot, warm or Cold Wash Temperature.
- ★ Swirlaway draining:

**\$219<sup>95</sup>**

Model A-106



New Maytag dishwasher holds more dishes and washes them cleaner than any other portable. Jet-cleans your dishes from three (3) levels, yet protects your fine china and crystal. Washes everything you place in it under a counter. Gives you famous Maytag Dependability.

# FRIGID PRODUCTS

113 North Main St., Chelsea

LLOYD R. HEYDLAUFF

Phone GR 9-6851